

Spirit of Antarctica

Aboard *Sylvia Earle* | 20 November – 30 November 2025





Spirit of Antarctica

20 November – 30 November 2025

Ushuaia

DAY 1 | Thursday 20 November 2025

Latitude: 54°48.8' S	Wind Speed: 14 knots SW	Here we are in the picturesque town of Ushuaia, 'the end of the world'. Our day began with breakfast at the hotel, overlooking the Beagle Channel and the pier, where the <i>Sylvia Earle</i> was already alongside, preparing to welcome us on board.	An embarkation buffet awaited us in the Tektite Bar, and the Hotel Team guided us to our cabins, our home away from home. Soon after, Expedition Leader Ashley welcomed everyone in the lecture theatre, sharing a short video featuring Sylvia Earle herself. Ashley then introduced our multi-skilled and enthusiastic Expedition Team. Anne and Hotel Director Alex explained life on board, and Expedition First Responder Laura and Ashley gave a short briefing on staying healthy during the voyage. Finally, Ashley outlined what to expect in the coming days, including a promising Drake Lake.
Longitude: 68°16.1' W	Barometer: 1002 hPa	Early morning, we set out from Ushuaia and crossed the southernmost foothills of the Andes toward Lake Fagnano, surrounded by forests and dramatic mountain views. After enjoying the scenery and taking photos, we continued to Las Cotorras, a rustic lodge where we savoured a traditional Argentinian BBQ lunch.	After Jacket Exchange and the mandatory Safety Drill, we gathered in the dining room for dinner, followed by Activity Teams hosting their Meet & Greet.
Course: Alongside	Air Temp: 6°C	Later, we headed to the pier and finally stood before the <i>Sylvia Earle</i> . Members of the Expedition Team, including Expedition Leader Ashley, Photographer Charlos, Onboard Expedition Manager Anne and Assistant Expedition Leader Dot greeted us warmly before we made our way up the gangway and into Reception for check-in.	Altogether, we are 106 Expeditioners from 11 nations, joined by 105 crew and 20 Expedition Team members. After many hours of travel, it was time to relax, breathe in the sea air, and look forward to the adventures ahead.
Speed: Alongside			

• Position at 0600







At Sea

DAY 2 | Friday 21 November 2025

Latitude:

57°54.8' S

Longitude:

66°02.8' W

Course:

175°

Speed:

11.9 knots

Wind Speed:

17 knots NNE

Barometer:

1006 hPa

Air Temp:

5°C

This morning we woke to our first expedition day on the *Sylvia Earle*, cruising south across the Drake Passage. The seas were kind, with only a small swell compared to what this notorious body of water can deliver. Instead of a 'Drake Shake', we enjoyed a gentle rocking through the night.

A full morning of 'Antarctica Admin' awaited us, the final stage of preparation before stepping ashore. We began with a Zodiac briefing, complete with pictures and demonstrations of how to safely board and disembark. This was followed by a bio-security session, explaining the steps taken to minimise our impact on Antarctica's land and wildlife.

Vicky introduced the Citizen Science program, before we undertook the important task of inspecting and cleaning our

packs and clothing. Metal brushes worked through stubborn Velcro tabs, and vacuum cleaners hummed across the Lecture Theatre. We were then shown the Mudroom at the aft of the ship, our gateway to adventure. Boots were fitted, lifejackets tried on, and excitement grew.

In the afternoon Marcelo presented an introduction to seabirds, and we joined our first Citizen Science activity with a cloud survey. Kayakers were fitted with dry suits, while skiers and snowshoers attended briefings and gear checks.

The evening brought a warm welcome from Captain Andrus Pruul, who introduced core crew members. After dinner, the observation lounge on deck 8 hosted the iceberg competition, as Expeditioners plotted guesses for the first sighting.





At Sea towards Antarctica

DAY 3 | Saturday 22 November 2025

Latitude:
61°47.6' S

Longitude:
65°14.4' W

Course:
175°

Speed:
10.8 knots

Wind Speed:
15.5 knots N

Barometer:
997 hPa

Air Temp:
4°C

Overnight we crossed the Antarctic Convergence, also known as the Polar Front. Nothing dramatic appeared on the surface, but the water temperature dropped and marine life began to shift, signalling our entry into the Southern Ocean.

The day began with Marcelo, who charmed and educated us with his lecture on cetaceans. We learned that a blue whale is technically a blue mysticete, and that orcas are toothed cetaceans, not killer 'whales'. Next came Richard, introducing Antarctic photography. One guest admitted to carrying 35 pounds of camera gear, a weight identical to the bag of rocks found in Captain Scott's tent after his fateful expedition to the South Pole in 1912.

Later, Vicky delivered a presentation on penguins. She explained their evolution beginning 62 million years ago,

when they traded flight for underwater mastery. Wings became stiff paddles, and feathers evolved into a tightly layered, waterproof insulating system. Sydney followed with an introduction to glaciology, exploring subglacial lakes, ancient ice, and why an icicle would be a better weapon than an 'ice bullet'. During recap, the seas picked up. Marcelo, looking slightly green, explained which animals can drink salt water; rats were an unexpected answer. Kelsey then introduced the Belgica Expedition, who named many features we will soon sail past.

After dinner, Richard hosted the first 'Humans of the *Sylvia Earle*' chat, launching his photography book *Way Down South*, a project spanning 10 years and eight voyages.





Damoy Point | Peltier Channel

DAY 4 | Sunday 23 November 2025

Latitude:
64°51.9' S

Longitude:
63°59.1' W

Course:
097°

Speed:
8.3 knots

Wind Speed:
37 knots NE

Barometer:
976 hPa

Air Temp:
2°C

We woke surrounded by white peaks and glaciers as we approached Damoy Point. Antarctica greeted us with a strong wind gusting to 25 knots, and we admired turquoise icebergs drifting past the ship.

Our intended landing site was blocked by brash ice, so we chose another spot beside a penguin colony. From there we hiked to Damoy Hut, a well-preserved building from 1973 once used as a British air facility and transit station. Inside, with its equipment and artefacts, it felt like a time capsule.

Back on board, the ship repositioned to the mouth of Peltier Channel. Conditions outside were poor, but here we enjoyed a 'bubble' of calmer weather. The wind eased, the cloud base lifted, and cliffs came into view. Skiers were dropped

for their mission, while the rest of us embarked on an extended Zodiac cruise. We passed glowing glacial faces in shades of blue and watched cormorants nesting on low islands.

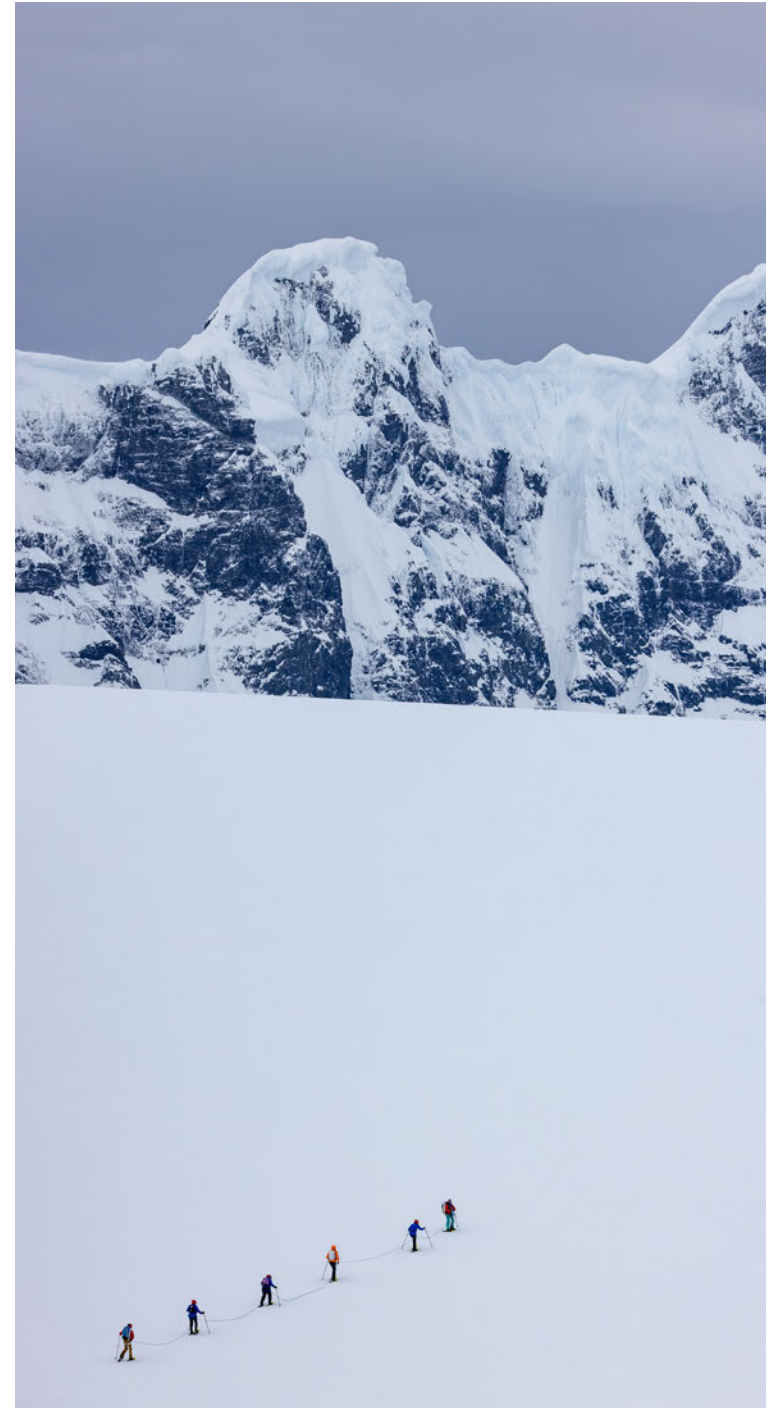
The *Sylvia Earle* herself navigated the narrow channel, a remarkable sight. Towards the end of the cruise we spotted a humpback whale feeding, a Weddell seal resting on rocks, and even a lone Adélie penguin.

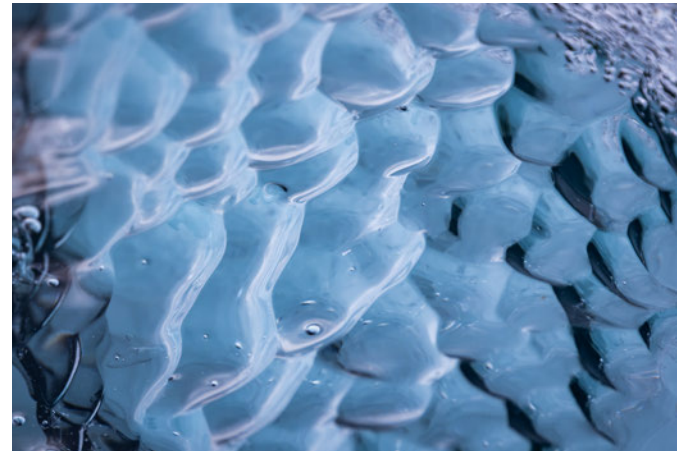
Later the ship entered the Lemaire Channel, one of the most scenic passages in the world. Expeditioners gathered on deck to marvel at towering cliffs and glacier faces so close it felt possible to reach out and touch them. An unforgettable first day in Antarctica.



















Pleneau Island | Petermann Island

DAY 5 | Monday 24 November 2025

Latitude:
65°05.0' S

Longitude:
64°07.6' W

Course:
At Anchor
Speed:
At Anchor

Wind Speed:
5 knots N

Barometer:
990 hPa

Air Temp:
3°C

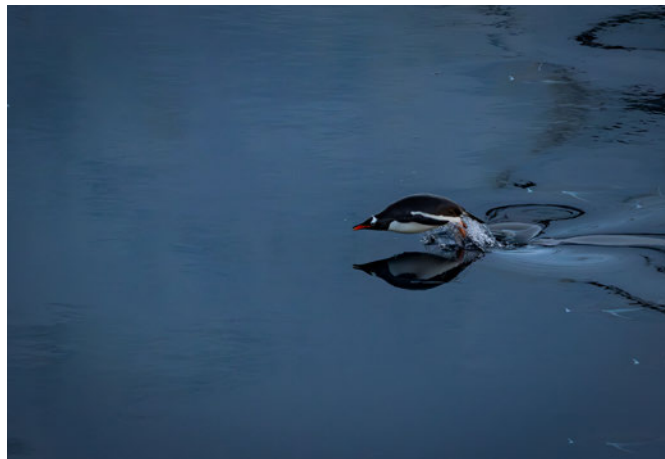
Morning found us moored off Pleneau Island, on the western side of Booth Island, where countless smaller isles and skerries form a graveyard of icebergs. Towering bergs with spires like fairytale castles lay beside rippled masses, shattered bergy bits, dark growlers, and remnants of winter sparkling sea ice. The mountains reflected into the deep water of the sound. The ice aggregation created a rich feeding ground for marine organisms, drawn by algae beneath the ice: amphipods, copepods, krill, salps, and more.

Penguins porpoised through mirror-flat water, leaving ripples as they flew beneath Zodiacs. Leopard seals lounged on floes, soaking up the sun, though one curious friend halted a planned polar plunge.

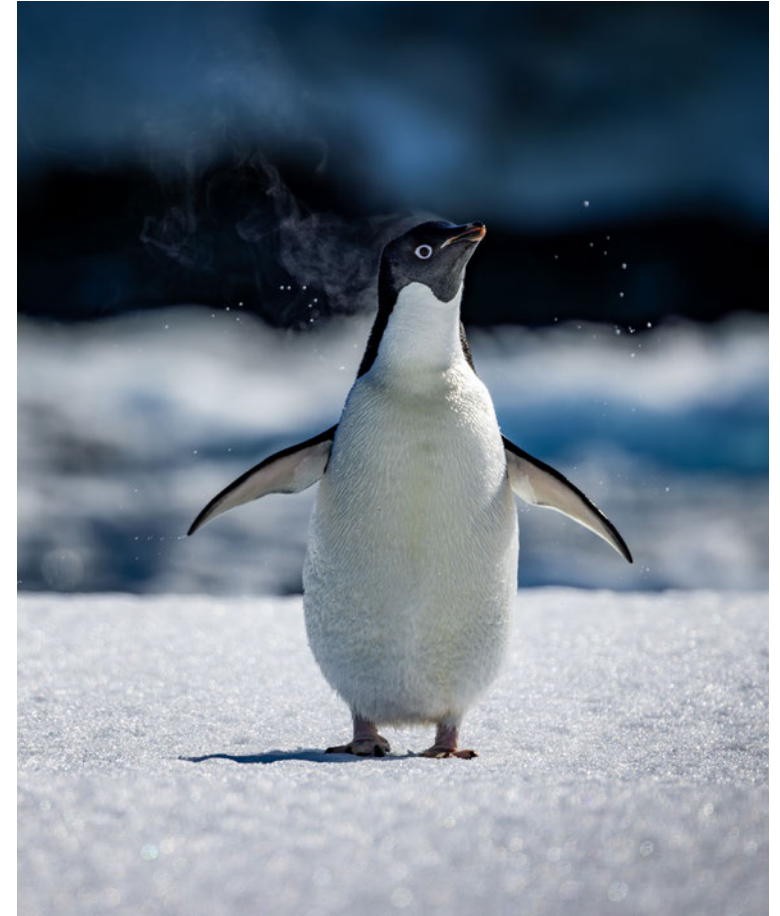
By lunchtime we had reached Petermann Island, an ice-capped rock on the frontier of the penguin world. Increasing numbers of gentoo penguins now nest here, alongside the northernmost Adélie colony on the western peninsula. Visiting a colony is a full sensory experience: sights, sounds, and smells of life. They waddled along highways, lounged in soft snow, and squabbled over stones to shore up nests, their feet plap-plapping against the ground.

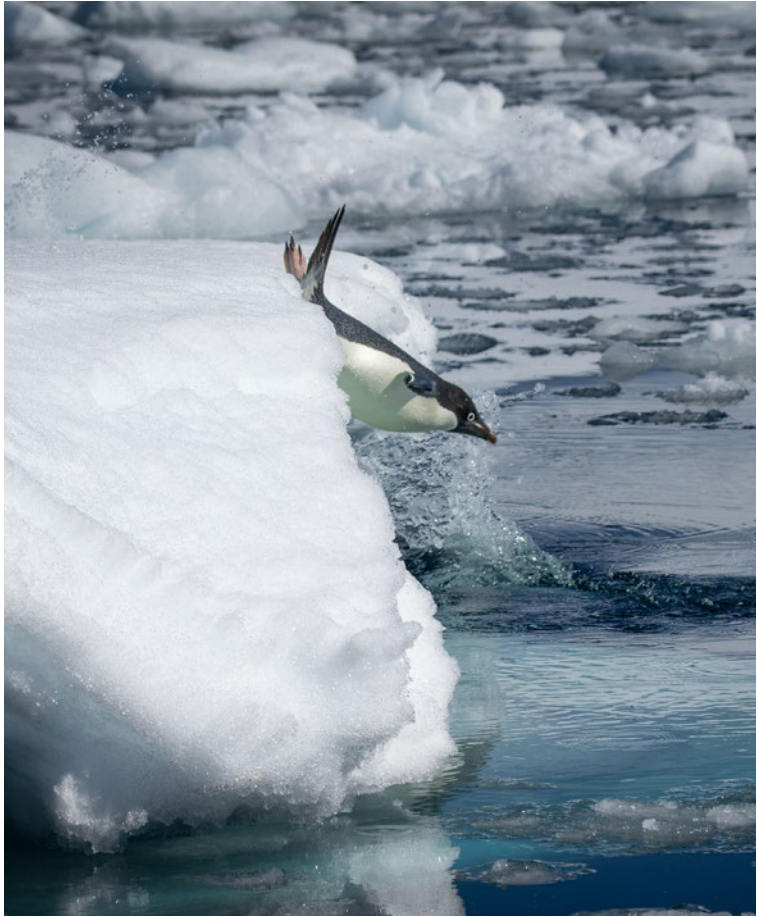
Then came a different sparkle. Leo took a knee to ask Yana to marry him, trousers destined for virkon treatment but hearts full of joy. Wishing them all the best for the future from everyone on board the *Sylvia Earle*.















Port Lockroy/ Jougla Point | Skontorp / Paradise Bay

DAY 6 | Tuesday 25 November 2025

Latitude:

64°40.6' S

Longitude:

63°30.7' W

Course:

At Anchor

Speed:

At Anchor

Wind Speed:

5 knots N

Barometer:

990 hPa

Air Temp:

3°C

Our expedition day on the Antarctic Peninsula began with a much-anticipated landing at historic Port Lockroy. Because the site is small and can welcome only twenty visitors at a time, the Expedition Team organised simultaneous operations to ensure everyone could explore without crowding.

While one group visited the museum, the old British base, and the lively gentoo colony, another headed to nearby Jougla Point. This rocky outcrop offered dramatic views of surrounding glaciers and whale bones scattered along the shore, reminders of the region's whaling past.

Meanwhile, adventurous Expeditioners joined additional activities. Snowshoers trekked across gentle slopes overlooking the bay, skiers ventured out for a dynamic

experience, and kayakers glided quietly among floating ice, observing wildlife from water level.

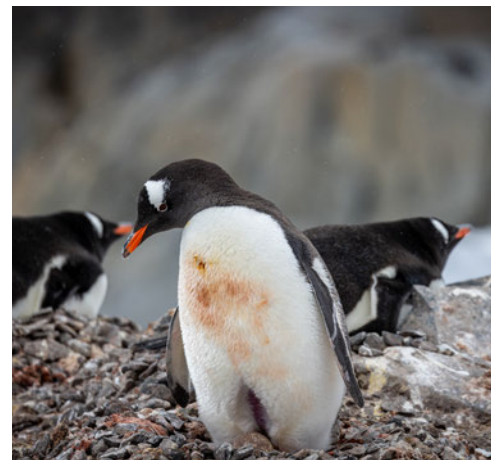
Afterwards, we returned to the *Sylvia Earle* for lunch. Panoramic windows allowed us to enjoy the scenery as we sailed toward Paradise Bay.

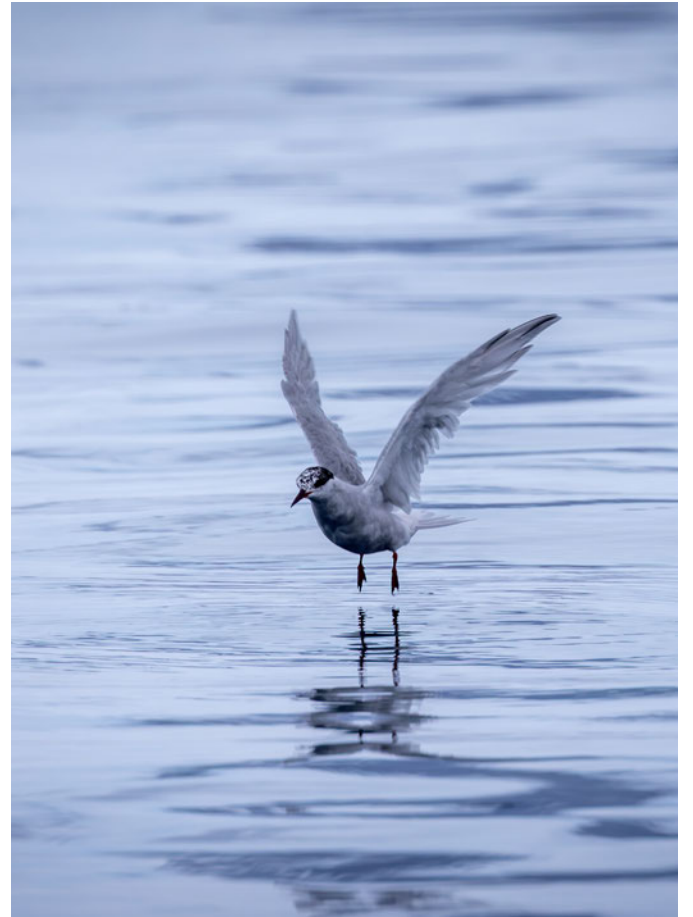
In the afternoon, conditions were ideal for Zodiac cruises toward Base Brown, the Argentine research station beneath dramatic cliffs. We were treated to unforgettable sightings of humpback whales feeding nearby, their blows echoing across the bay. Kayakers took to the water for a close perspective, while the Ski Group continued their adventure across pristine snow. It was a day filled with discovery, wildlife encounters, and the remarkable beauty of Antarctica.















Enterprise Island | Portal Point

DAY 7 | Wednesday 26 November 2025

Latitude:

64°25.9' S

Longitude:

61°57.3' W

Course:

207°

Speed:

6.5 knots

Wind Speed:

16 knots NNE

Barometer:

991 hPa

Air Temp:

0°C

Today was a big day. We began at Enterprise Island with a Zodiac cruise, gliding around like tiny ducks in an ice bath. The highlight was the famous shipwreck of the *Guvernøren*, sitting dramatically photogenic as if aware it was the star of countless travel blogs.

By midday the polar plunge raised the chaos level. Light snow fell as 73 brave souls lined up to leap from a floating platform at the stern. Some plunged for bragging rights, others perhaps from lost bets. The water was so cold it felt like being slapped by frozen penguin flippers. As we plunged, the *Greg Mortimer* appeared on the horizon, meeting the *Sylvia Earle* like a long-lost friend. The ships exchanged Zodiacs and supplies.

We then proceeded to Portal Point for a continental landing. Two humpback whales surfaced casually before vanishing. The site was filled with stranded icebergs sculpted into shapes worthy of a modern art gallery.

The afternoon landing was short, but dinner was a full BBQ surrounded by glaciers. Expeditioners wore funny hats ranging from quirky to regrettable, adding humour to the icy splendour.

Finally, a group prepared to camp overnight in Antarctica. What a day, what a place, what a group of delightful lunatics.

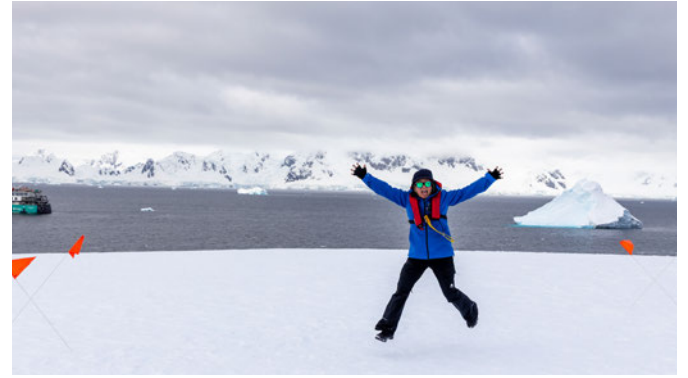














Graham Passage | Palaver Point

DAY 8 | Thursday 27 November 2025

Latitude: 64°23.8' S	Wind Speed: 9.8 knots N	Our final full day in Antarctica began in the soft blue light of early morning, as the brave campers returned to the ship after a successful night on the ice. They stepped on board with tired smiles and tales of snoring companions, before enjoying an early-riser breakfast and a well-earned nap. Kelsey's cheerful wake-up call summoned everyone back into adventure mode. We bundled up and headed out for a Zodiac cruise through Graham Pass, a narrow corridor where towering ice walls seemed to close in around us. Whether zipping between sculpted icebergs or admiring the view from the warmth of the ship, we were surrounded by serene Antarctic majesty.	Lunch was served with a delicious mushroom consommé that demanded seconds. In the afternoon we landed at Palaver Point, home to a noisy colony of chinstrap penguins. Their calls accompanied us as we trekked to a glacier viewpoint, a fitting finale to our landings. We laughed with Vicky about Zodiac names, with Sydney about pareidolia, and if lucky, joined Marcelo at the 'Magic' table. The day closed with dessert and Scott's 'People of the <i>Sylvia Earle</i> ' lecture, reflecting on longevity and 'The 28'. What a wonderful last day in Antarctica.
Longitude: 61°37.3' W	Barometer: 996 hPa		
Course: 350°	Air Temp: 0°C		
Speed: 3.4 knots			

At Sea

DAY 9 | Friday 28 November 2025

Latitude:	Wind Speed:
61°55.7' S	18 knots E
Longitude:	Barometer:
63°54.2' W	992 hPa
Course:	Air Temp:
340°	1°C
Speed:	
10 knots	

As we sailed north aboard the *Sylvia Earle*, leaving behind the white landscapes of Antarctica, the Drake Passage began to deteriorate steadily. What had started as a gentle roll grew more energetic, and with every passing hour the motion increased. The swell became insistent, the wind strengthened, and the familiar rhythm of the ship evolved into heavier, less predictable movement.

As the waves built and pitching intensified, passengers and staff gradually made their way to cabins. Once-busy corridors grew quieter, carrying only the sound of engines and the crash of water against the hull.

Even under these conditions, the Expedition Team kept the program active. Workshops included seabird counting from the outer decks by a brave group of observers. Despite the weather, they were rewarded with sightings of southern

ocean seabirds. The graceful light-mantled albatross performed sweeping arcs above the waves, while the elegant grey-headed albatross glided with silver tones and sharp profile. These moments reminded us how perfectly adapted these birds are to life in one of the windiest marine environments on Earth.

Between sets of swell, ship tours to the bridge gave passengers a chance to visit the nerve centre of the vessel. Officers explained navigation procedures, radar systems and weather interpretation, offering insight into guiding an expedition ship through unpredictable waters.

Our historian Kelsey presented an engaging lecture on Adrien de Gerlache and the Belgica Expedition, exploring hardships, scientific achievements, and human stories behind the first crew to overwinter in Antarctica.

At Sea towards Ushuaia

DAY 10 | Saturday 29 November 2025

Latitude:

57°35.6' S

Longitude:

65°11.7' W

Course:

345°

Speed:

10.1 knots

Wind Speed:

15 knots SSW

Barometer:

1005 hPa

Air Temp:

3°C

It was a night of shake, rattle and roll as we crossed the Drake Passage. The crew had secured everything, so the ship remained pristine, unlike another vessel we heard about whose restaurant looked as if struck by an earthquake.

The morning began with a late breakfast, followed by discussion of the Madrid Protocol and the removal of invasive species from Antarctica. Next came the disembarkation briefing with Anne. Logistically it will run like clockwork tomorrow, though with many moving parts. It reminded us of a duck swimming, calm above the water but paddling furiously below.

After lunch, Expedition Leader Ashley presented 'Living @67° South'. She shared her three years living and working at Rothera base below the Antarctic Circle and at Grytviken on South Georgia.

Several of us then joined Sydney and Marcelo for the workshop 'Keeping the Magic Alive'. By the end we felt like true ambassadors for Antarctica. Marcelo highlighted the damage caused by krill fishing and the uncertainty of ocean life estimates, reminding us that even small actions at home can have impact.

The evening brought the Captain's and Expedition Team farewell. A humpback whale submitted to Happy Whale was named 'Super Mario'. Carlos presented a slideshow, a wonderful memento of our voyage.

Somewhere along the line we packed, ready for tomorrow. The memories from our time on board the *Sylvia Earle* will stay with us for years to come. Thank you, Aurora.

Ushuaia

DAY 11 | Sunday 30 November 2025

Latitude:

54°52.5' S

Longitude:

67°59.0' W

Course:

285°

Speed:

12.7 knots

Wind Speed:

5 knots SW

Barometer:

1010 hPa

Air Temp:

8°C

Aurora Expeditions send out a big thank you to you all for your great humour, infectious enthusiasm and smiling faces. It was a pleasure having you all on board and being able to share some of the pleasures that the icy south has to offer. May your memories live long and bright. We have travelled 1598 nautical miles together

Camping



BBQ





Polar Plunge









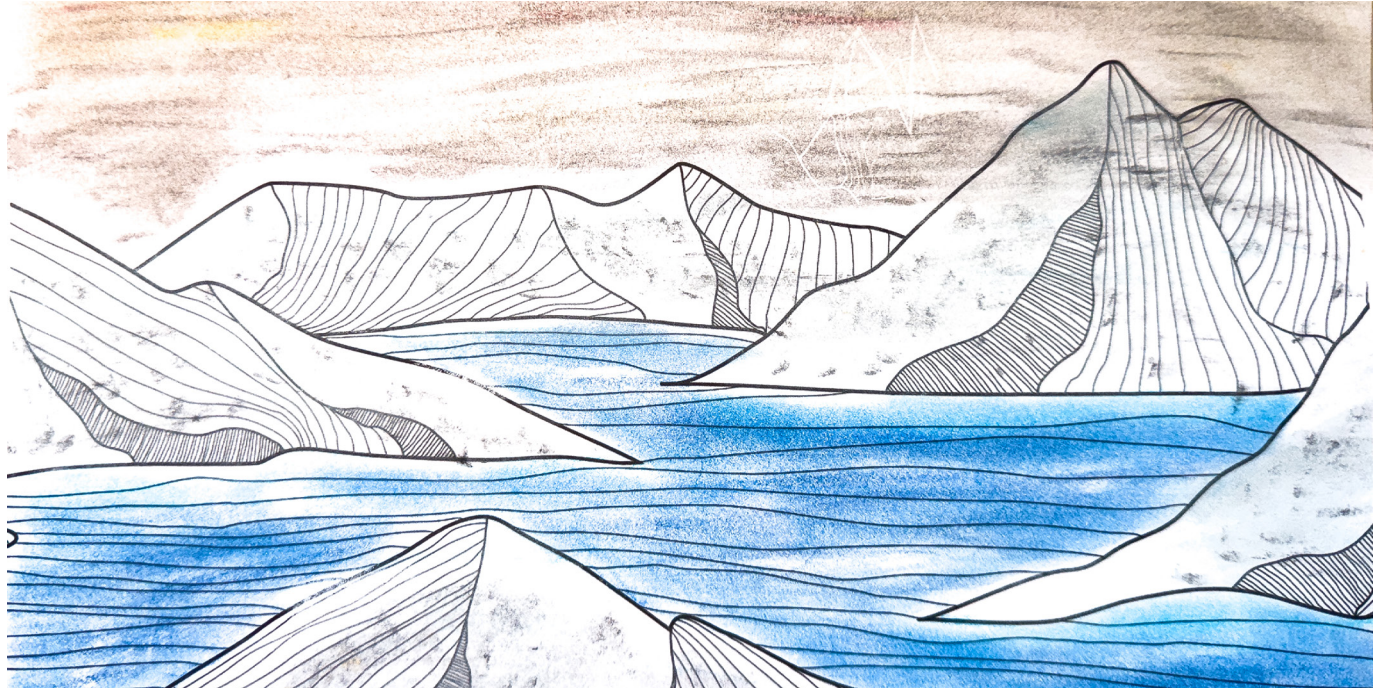






Artwork

Artwork by Aurelio Cuervo



Artwork by Mario Borjas Paredes



Citizen Science

Project	Project Runs	Overview
Happywhale	n/a	Several encounters with humpback whales in different locations on this voyage generated suitable photographs for submission to Happywhale. Two expeditioners were able to upload images to the website during the voyage, receiving notifications of matches from their whale, and one new to the catalogue. Laura Boenish and one expeditioner with a match were able to arrange a crowd funder among other expeditioners to raise the \$500 to name the whale. Currently looking like it will be named Super Mario.
NASA GLOBE Cloud	3	A workshop on cloud spotting held in the observation lounge, followed by a first survey. In total, 2 cloud surveys carried out from the ship, satellite flyover matches still pending to date. A survey was carried out on shore at Petermann Island to coincide with a satellite pass, using the CSCs own account.
Southern Ocean Seabird Survey (eBird)	3	A workshop on seabird identification was held to point out the most common species and give identification tips before the first survey. In total, 3 Southern Ocean Seabird surveys were carried out from the ship during the sea passage from Ushuaia to the Peninsula and on the return journey. Additional time was spent out on deck watching and photographing birds, though the sea state contributed to a low number of participants on the return journey.
Other eBird lists	0	
Secchi Disk	1	
Fjord Phyto	2	
SnowAlgae	0	
iNaturalist	0	





Kayaking Log

Guides: Gabby Bruce, Ivan Klochkov, Eduardo Larranaga Garcia

24 November 2025, AM:
Pleneau Point — 3.6km

We could not have asked for better weather as we began our first kayak operation of the trip. With our fearless leaders, Gabby, Ivan and Edu, we began getting into the kayaks on the glassy calm waters. The amount of ice and icebergs surrounding us was overwhelming. As we glided through the water, the reflections of the mountains and nearby glaciers were incredible. Everyone followed as we navigated our way through towering, grounded icebergs which we called the iceberg graveyard. It was a highlight having a special 'zen' moment, as Gabby called it, where we sat in silence and listened to the sounds of Antarctica for a few minutes. Ice in all shapes and sizes could be seen as we barged through so much brash ice, making our way back to the ship in complete awe of the morning we had just experienced.

24 November 2025, PM:
Petermann Island — 5.5km

In the afternoon the weather was just as amazing as in the morning. We got into our kayaks next to Petermann Island. While the rest of the Expeditioners were landing on it, we decided to attempt a circumnavigation. We started paddling anticlockwise, trying to stay in the open water and exploring the beautiful low-lying coastline. On the western side of the island, we could feel gentle swell moving our kayaks up and down. At some point we spotted an amazing giant iceberg floating in the water, it was almost entirely black ice. Once we reached the southernmost tip of the island and turned towards the ship, we realised that the brash ice was far too thick for us to paddle back in time, so we hopped in our Zodiacs and returned to the ship. It was an amazing adventure.

Number of Kayakers: 18

Total Paddle Outings: 8

Total Distance Paddled: 37.2 km

Kayakers:

Ann Clark

Charles Doran

Jennifer Baczewski

Praewta Wangthamrongwit

Jacquie DeSimone

Zuzana Hurych

Gary Parkinson

Michelle Winrow

Graham Smith

Judith Lee

Edwin Hobbel

Renzhe Zhang

Nely Fernandez

Dianne Ehler

Peter Michall

Lawrence Tsui

Kiki Chan

Kevin She

25 November 2025, AM: Port Lockroy — 4.2km

This morning we set out for a paddle around the surroundings of Port Lockroy. After visiting the historic Base A and its small museum, we were picked up by Zodiac and began a short but beautiful kayaking outing on the calm waters of Lockroy. We stayed close to the shoreline as we explored, spotting gentoo penguins porpoising in and out of the water, along with colonies of Antarctic shags and kelp gulls resting on the rocky slopes. Toward the end of this peaceful paddle, we came across three Weddell seals quietly resting on the snow, an unexpected and memorable highlight of the excursion. Once we concluded the outing, we practised a few paddling techniques before heading back to the *Sylvia Earle* to enjoy a well-deserved lunch.

25 November 2025, PM: Paradise Harbour — 4.2km

After our adventure in Port Lockroy we set off to explore Paradise Harbour, surrounded once again by ice and glacial faces. The harbour is home to an Argentine meteorological research base called Brown. We paddled beside the huts and Ivan shared an interesting story about a man who did not want to winter there. Then whales appeared. We set off in their direction to observe them from afar and had great views of flukes and active feeding as they passed through. We left the whales to their feeding frenzy and continued our paddle along the coastline, where we saw nesting shags, terns dip-feeding, and striking rock formations. As we came around the point into another bay surrounded once again by towering ice, we admired the incredible scenery before hopping back onto the Zodiac and returning to the ship.

26 November 2025, AM: Enterprise Island — 4.6km

It was a chilly morning, but the sea was wonderful in the shelter of Enterprise Island. We hit the water in a sheltered bay next to Foyen Harbour, a place where lies a famous shipwreck, the *Governoren*. She was a Norwegian whaling factory ship that caught fire and was intentionally beached here in 1915. The fire, which started during a crew celebration, was caused by an oil lamp and spread to the ship's blubber-filled cargo. We floated next to it, picturing the old days when whalers were still coming to Antarctica. All of us agreed that it is great those days are over. We then moved on and explored beautiful channels between tiny islets to the east of the island, circling around turquoise icebergs and enjoying flat calm seas. Once we reached the southernmost tip of the island, it was time to return to the ship.

26 November 2025, PM: Portal Point — 4.8km

This afternoon's paddle was wonderfully peaceful, almost serene. Most of the group had gone off to set up camp, so only three of you had the chance to explore this corner of Antarctica by kayak. As we traced the coastline, a lone crabeater seal watched us pass, and a small group of penguins gathered at the water's edge, mustering the courage to dive into the sea. The wind had pushed a collection of massive blue icebergs into the bay, and weaving our kayaks through them felt like navigating a frozen maze, an experience as rare as it was mesmerising. When we finally set our paddles down, Iván guided us to the landing site, where you placed your feet on the Antarctic continent itself, an unforgettable ending to a quiet, magical journey.



27 November 2025, AM: Graham Passage — 5.8km

The morning began with whale watching. Just off the marina deck we had a very curious humpback whale checking everyone out. After the slight distraction we began our kayak outing, towing into Graham Passage. The paddle consisted of lots of ice dodging and spectacular views. We had our eyes set on a peculiar-looking iceberg in the distance close to where the ship had repositioned. As we made our way there we had the passage all to ourselves, so we took this opportunity to have another 'zen' moment. As we floated in silence listening to the sounds around us we began hearing many whale blows, but we could not see them. We decided to patiently wait in the bay, enjoying the moment, when suddenly Gabby made a surprised sound as a whale surfaced right in front of her. Everyone sat and

enjoyed as the whale slowly passed by before diving down again. What an epic experience. The journey continued in the direction of the ship and our interesting iceberg. We spotted some gentoo penguins and our favourite Adélie penguin, all resting on a large piece of ice. Finishing our paddle next to the incredible towering iceberg with striking shapes was a highlight.

27 November 2025, PM: Palaver Point — 4.5km

It was the final kayaking outing of our trip. The wind was quite strong, but we decided to explore the coast of Two Hammock Island going downwind. We paddled next to the chinstrap penguin colony first, and it was so much fun to see them go in and out of the water. We then went south and as soon as we turned around the corner, we were out of sight of the ship and everyone else.

We paddled along the stunning glacial face when suddenly a humpback whale surfaced right next to us. We continued paddling through some wind coming from the glaciers and decided to finish our paddle next to a rocky headland. When we were about to get into the Zodiacs, another whale surfaced right in the middle of our group. It was such a magical moment, a great way to finish the trip and a warm farewell from Antarctica.











Ski Log

Guides: Tarn Pilkington, Bron Waters, Sebastian Rojas Schmidt, Brian Muller, Jimmy Armstrong

23 November 2025, AM: Damoy Point, Dorian Bay, Wiencke Island

First stop was the historic Damoy Hut, about 100 m from the shoreline. It gives a good reminder of the simpler times of working remotely. The ski excursion was mostly a training day, particularly getting used to travelling roped-up. A skin up towards the Twin Otter landing strip offered great views of the Seven Sisters peaks. Punchy snow conditions meant the skins stayed on for the descent.

23 November 2025, PM: Doumer Island, Palmer Archipelago

We took a long Zodiac ride to the southern end of Doumer via the Peltier Channel, tasking up to Doumer Hill. It was an out-and-back circuit taking in views of the Peltier, the Seven Sisters, and south to the Lemaire Channel. A humpback whale

sighted from up high made a close approach to one of our Zodiacs on the way out of the bay (captured on camera by Sebastian).

24 November 2025, PM: Hovgaard Island, near Lemaire Channel, south of Pleneau Island

A beautiful, still sunny day. After an awesome ice-filled Zodiac delivery, we skinned up to the highest point with views of the mainland to the east and the many islands to the east. Two humpback whales cruised below us for the duration of our ski tour. Some keen folks did multiple spring-skiing laps and then all had a fun ski back to the Zodiacs. From there, Sergei and Ivan took us through the ice into Penola Strait for an underway pickup by the *Sylvia Earle*, while 'Born to Be Wild' cranked from Ivan's portable speaker.



Number of Skiers: 11

Total Outings: 9

Skiers:

Donald Plumley

Nasim Zarkesh

Reza Ronaghi

Alexa Ellman

Scott Buell

Katherine Buell

Phil Hansen

Amber Rawle

Vicenzo Ricciuti

Siyan Yin

Antar Machado

25 November 2025, AM: Doumer Island, Stokes Hill

Another early start with a coffee and light breakfast. This gave us four hours for a good trip up Stokes Hill and ski back in time to catch a Zodiac over to visit the museum and post office at the British-run Port Lockroy base. Penguins were nesting at the front door.

25 November 2025, PM: Leith Peak, Leith Cove, Paradise Harbour

This was an unexpected opportunity for a first landing on the continent of the Antarctic Peninsula. In cloudy conditions we grabbed another chance to get out and up to a quite crevassed Leith Peak. A large threatening cornice and poor visibility meant we opted for the first summit and skied a fun pitch back to the landing between crevasses.

26 November 2025, AM: Enterprise Island, Foyen Harbour

A gentle skin up to the high point with great views over the glaciated archipelago, Nansen Island very close to the south, Brabant Island to the west, and north into the Gerlache Strait. A few centimetres of new snow overnight made for pleasant turns back down to the bay, where humpback whales were inquisitive throughout the day. On our way out we passed the wreck of the *Guvernøren*, for which the excellent harbour is also named.

26 November 2025, PM: Portal Point, northeast point of the Reclus Peninsula, Danco Coast

This narrow point was another chance to ski on part of the continent of the Antarctic Peninsula. It was a choice skin up to a promontory with great views across the entrance of

Charlotte Bay to the east and out into the Gerlache Strait to the north, with a fun ski back to the Zodiacs.

27 November 2025, AM: Bluff / Murray Island

Described by many of the crew as the most standout day. The morning cloud lifted as we moved north to see the peaks of the island. The whole team was organised and got away smoothly. A short, steep boot-pack got us up to easy skinning with awesome views in all directions: the mainland to the south and icebergs out into the Gerlache Strait. The few centimetres of snow that some of the campers had seen overnight made for sweet skiing on the upper slopes of the island. It looked like a heliski run once we had all had a lap and skied down the steep section to the landing.

27 November 2025, PM: Palaver Point, Two Hummock Island

We were lucky with conditions on what can be quite a difficult landing. A slightly trickier skin up through the rocks, avoiding gulls and chinstrap penguins, led to an elevated viewpoint of Crocker Passage to the west and the broken glacial bridge joining the point to the upper slopes of the island. We scratched our way back down to the main group and had time to savour our last moments of the trip with some close-up encounters with chinstrap penguins near the shore. Back to the *Sylvia Earle* for the last time as we headed back towards Ushuaia.









Snowshoeing Log

Guides: Tarn Pilkington, Bronwen Waters, Jimmy Armstrong, Sebastian Rojas Schmidt

23 November 2025, AM: Damoy Point, Wiencke Island

Our first landing and snowshoe. The benefits of having snowshoes became apparent immediately at this landing site, as the snow cover was 'punchy', meaning your feet would pop through unless you had your snowshoes on. We made our way around our first gentoo penguin colonies, rising and falling over a small hill. Behind the small historic huts at Damoy, the rope was laid out so we could connect to it to rope up for our trip up the glacier. It was a gentle, gradual hill that brought us to the top of the ridge, and we walked along what had been in the past a ski plane runway. This location gave us great views of Dorian Bay and Port Lockroy. Guides: Bron and Jimmy.

24 November 2025, AM: Pleneau Island

We took an early Zodiac ride through the spectacular iceberg graveyard to get to our snowshoe location on Pleneau Island. The sky was blue and the sun shining, making the blue of the icebergs so bright and vivid. We wandered up and around the gentoo penguin colony, spotting skuas maintaining a keen eye on the penguin nests. After leaving the penguins behind we reached a large plateau on top of the island with great views down to the fast ice surrounding the western side of the island. Before our Zodiac pick-up we observed a crabeater seal resting on the snow.



Number of Snowshoers: 4

Total Outings: 5

Snowshoers:

Alice Rischert

Patty Stein

Jason Yang

Echo Gu

25 November 2025, AM: Jougla Point

After a visit to the museum at Port Lockroy, we crossed over the narrow body of water separating Goudier Island from Jougla Point on Wiencke Island. Jougla Point was the busiest penguin colony we had seen so far, so we took time to observe the penguins at this location. We saw many eggs on this outing, as nesting penguins occasionally stood up and exposed their belly and brood pouch. We took an out-and-back track, winding our way around the various nesting areas.

26 November 2025, AM: Enterprise Island

After arriving at Enterprise Island we roped up and made our way up a snowy ramp with moderate steepness. The slope then eased and a broad view soon started to open up as we walked towards the summit. Enterprise Island gave a spectacular view. We could see in all directions: to the Antarctic continent, to the numerous other islands in the distance. At the summit we met up with the skiers who had just returned from a run down the far side of the island. Returning to the shore we had a constant panorama, looking down on icebergs and a small-looking *Sylvia Earle*.

26 November 2025, PM: Portal Point

Our last snowshoe, and a special one as it was our first on the Antarctic continent. Portal Point is an interesting piece of coastline, with a high bridge of glaciated slope between the headland and the glaciated mountainside that led to the Reclus Peninsula. We wandered over the 'bridge', able to see down both sides to an area of brash ice and rocky reef, where seals were dotted around, hauled out on the rocks. We zig-zagged our way up the mountainside a distance to get a good view of the point and of Charlotte Bay. Once again we had lots of visibility to see down the bay and into the Gerlache Strait. A spectacular spot.





Bird & Mammal Sightings

Bird Species	November										
	20	21	22	23	24	25	26	27	28	29	30
Gentoo Penguin				●	●	●	●	●			
Chinstrap Penguin				●	●			●			
Adelie Penguin				●	●	●		●			
Wandering Albatross (Snowy)										●	
Black-Browed Albatross	●		●							●	
Grey-Headed Albatross			●						●	●	
Light-Mantled Albatross		●	●						●	●	
Giant Petrel Sp. (Northern or Southern)				●	●	●		●	●	●	
Cape Petrel		●	●						●	●	
Snow Petrel				●				●			
Antarctic Fulmar (Southern Fulmar)		●	●	●						●	
Blue Petrel		●	●							●	
Prion Sp. (Likely Antarctic)		●	●							●	
White-Chinned Petrel		●									
Sooty Shearwater		●									
Imperial Cormorant (Blue-Eyed Shag)	●			●	●	●	●	●			

Bird Species	November										
	20	21	22	23	24	25	26	27	28	29	30
Dolphin Gull	●										●
Kelp Gull	●			●	●	●	●	●			●
Skua (Brown or South Polar)				●	●	●		●			
South American Tern	●										
Antarctic Tern				●	●	●	●	●			
Snowy Sheathbill				●	●	●	●				

Mammal Species	November										
	20	21	22	23	24	25	26	27	28	29	30
Crabeater Seal						●					
Weddell Seal					●	●					
Leopard Seal					●	●					
Minke Whale								●			
Fin Whale		●									
Humpback Whale			●	●		●	●	●			

Map

1. Damoy Point, Wiencke Island, Peltier Channel
2. Lemaire Channel
3. Pleneau Island, Petermann Island
4. Port Lockroy & Jougla Point
5. Paradise Harbour
6. Foyen Harbour, Enterprise Island
7. Portal Point, Antarctic Continent
8. Graham Passage
9. Palaver Point, Two Hummock Island

Spirit of Antarctica

20 November – 30 November 2025





Our Expeditioners

Lindsay Arnell	Alexa Ellman	John Lovell	Monet O'Brien	Agastya Sinha	Wangthamrongwit
Tiziana Auletta	Nely Fernandez	Mandie Lowry	Pao Osathanond	Patricia Slade	Nic West
Jen Baczewski	Irshaad Gouse	Rosie Lowry	Gary Parkinson	David Slivken	Michelle Winrow
Anil Bahadure	Echo Gu	Antar Machado Opazo	Donald Plumley	Graham Smith	Ashton Wong
Sandhya Bahadure	Deb Hall	Yana Mamedova	Kelang Pu	Jason Stefanides	Wong Wong
Mario Borjas Paredes	Phil Hansen	Nadia Matthie	Poy Puntuyakorn	Pat Stein	Jason Yang
Katy Buell	Susan Harris	Sharon Matthie	Amber Rawle	Joanna Sword	CiCi Yin
Scott Buell	Baerbel Heck	Gevan Mattu	John Reagan	Kess Tanprasert	Hoi Yuen Lam
Carlos Caballero	Edwin Hobbel	Siti Mattu	Vicenzo Ricciuti	Pam Tanprasert	Nasim Zarkesh
Tom Carpenter	Sal Hunter	Luise McEwen	Steve Rich	Charin Techapermphon	Renzhe Zhang
Kiki Chan	Zuzana Hurych	Stephen McEwen	Alice Rischert	Danny Tevrizian	
Andrei Ciurea	Richard I'Anson	Larry Michael	Reza Ronaghi	Jan Tevrizian	
Ann Clark	Daisy Kumala	Linda Michael	Magaly Santos	Leo Theisen	
Aurelio Cuervo Jr	Lam Lam	Peter Michael	Mateo Santos	Mark Tiarks	
Jacquie DeSimone	Judith Lee	Dariusz Michalek	Karl Schmid	Lawrence Tsui	
Amie Domingo	Nicholas Lee	Chris Monahan	Marco Schmid	David Walker	
Mateo Domingo	Mark Leinmiller	Jenn Morse	Ursula Schmid	Dulce Walker	
Charlie Doran	Pamela Leinmiller	Brian Muller	Kathy Schroeder	Arlene Waller	
Brian Doxtader	Charmaine Lovell	Bob Mumgaard	Kevin She	Marshal Waller	
Dianne Ehler	Erin Lovell	Rachael Mumgaard	Keller Shinholser	Peach	

Expedition Team

Expedition Leader: Ashley Perrin

Assistant Expedition Leader: Dot Robertson

Onboard Expedition Manager: Anne Oeyasaeter

Shop Manager: Cecilia Mossi

Marine Biologist: Marcelo Flores

Glaciologist/Geologist EC: Sydney Carste

Ornithologist/Naturalist CSC: Vicky Inglis

Historian: Kelsey Camacho

Photography Guide: Carlos Mauer

Expedition First Responder: Laura Boenish

Expedition Guide: Zhongyuan Chen

Lead Kayak Guide: Gabby Bruce

Senior Kayak Guide: Edu Larranga

Senior Kayak Guide: Ivan Klochkov

Lead Alpine Guide: Tarn Pilkington

Alpine Guide: Bronwen Waters

Alpine Guide: Jimmy Armstrong

Alpine Guide: Seb Rojas

Zodiac Master: Serghei Hinchu

Senior Officers & Heads of Department

Master: Andrus Pruul

Chief Officer: Viktor Koshelets

Second Officer: Bryan Joseph Salem

Safety Officer: Teddy Jr Lachica

Bosun: Leo Francis Marzan

Ship Doctor: Jose Mullevskyir Sanjuan

Chief Engineer: Artem Vyshnevskyi

First Engineer: Sergei Luba

IT Officer: Rene Reyes

Hotel Director: Alex Barkar

F&B Service Manager: Narendra Seeram

Head Bartender: Sheenie Landauz

Chief Purser: Pedro Camilo Jr Diaz

Executive Chef: Indra Wicaksono

Sous Chef: Priteviraj Dakona

Hotel Controller: Orlando Costa

Receptionist: Angela Manuel

Receptionist: Jaica Puyod

Head Stateroom Attendant: Florante Lusong

Deck Cadet: Rahul Bhagat

Able Seaman: Eduardo Aloyan

Able Seaman: John Sibug

Able Seaman: Rosendo Cruz

Able Seaman: Anthony Brosas

Able Seaman: Dan Danico

Photography thanks to:

Carlos Mauer





-
-  facebook.com/auroraex
 -  [@aurora_expeditions](https://instagram.com/aurora_expeditions)
 -  youtube.com/auroraexpeditions
 -  [Aurora Expeditions \(@Polar_Experts\)](https://twitter.com/Polar_Experts)