

In Shackleton's Footsteps

Aboard *Sylvia Earle* | 2 November – 20 November 2025



In Shackleton's Footsteps

2 November – 20 November 2025



Ushuaia

DAY 1 | Sunday 2 November 2025

Latitude:
54°48.62' S

Longitude:
68°17.52' W

Course:
Alongside
Speed:
Alongside

Wind Speed:
20 knots WE

Barometer:
997 hPa

Air Temp:
3°C

Here we are in the picturesque town of Ushuaia, 'the end of the world'. Our day began with breakfast at the hotel, overlooking the Beagle Channel and the pier, where the *Sylvia Earle* was already alongside, preparing to welcome us aboard. We set out from Ushuaia and crossed the southernmost foothills of the Andes toward Lake Fagnano, surrounded by forests and dramatic mountain views. After enjoying the scenery and taking photos, we continued to Las Cotorras, where we savoured a traditional Argentinian BBQ lunch. The wild beauty of Tierra del Fuego made for a perfect start to our adventure.

Later, we headed to the pier and finally stood before the *Sylvia Earle*. Members of the Expedition Team, including Expedition Leader Ashley, photographer Charly, on board Expedition Manager Anne and Assistant Expedition Leader Dot greeted us warmly before we made our way up the gangway and into Reception for check-in.

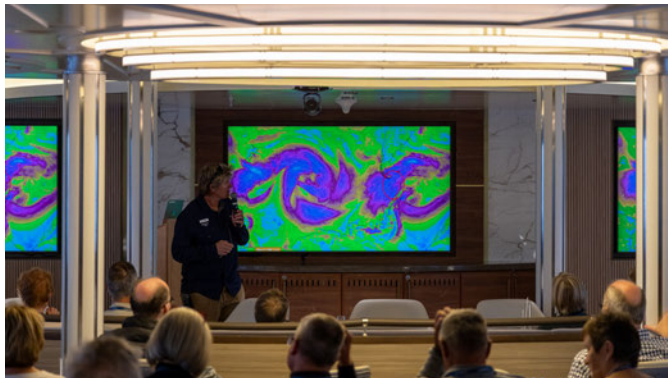
An embarkation buffet awaited us in the Elephant Island Bar, and the hotel team guided us to our cabins. Soon after, Ashley welcomed everyone in the lecture theatre, sharing a short video featuring Sylvia Earle herself. Ashley then introduced our multi-skilled Expedition Team. Anne and Hotel Director Alex explained life on board, and Medic Laura and Ashley gave a short briefing on staying healthy during the voyage.

Altogether, we are 92 Expeditioners from: Australia 25, Canada 7, China 2, Germany 2, Ireland 1, Netherlands 3, New Zealand 4, Sweden 3, United Kingdom 18 and United States 27, joined by 85 crew members and 18 Expedition Team members ready to share their knowledge.

After many hours of travel, it's time to relax, breathe in the sea air, and look forward to the adventures ahead.







Ushuaia

DAY 2 | Monday 3 November 2025

Latitude:
54°48.62' S

Longitude:
68°17.52' W

Course:
193°

Speed:
Alongside

Wind Speed:
20 knots SW

Barometer:
996 hPa

Air Temp:
4°C

We woke to a bonus day in Ushuaia: a snowy morning alongside the pier at the end of the world. We used the calm waters to complete mandatory IAATO and Zodiac briefings after breakfast. Our Citizen Science coordinator, Vicky, outlined the projects we support on board and how we can contribute to ongoing datasets during the voyage.

After the briefings, we headed to the mudroom to familiarise ourselves with our portal to the outside world. We tried on muckboots and learned the ins and outs of lifejackets. Meanwhile, kayakers and mountaineers gathered in activity groups and tested gear. It was a privilege to do this in stable conditions, far easier than in the Drake.

The mountaineers took a trial trip to the glacier north of the city centre, testing equipment and feeling winds and flurries. It was the perfect way to prepare for the Shackleton crossing.

Many of us joined an excursion to Tierra del Fuego National Park. We travelled west, stopping at Ensenada Bay, Roca Lake and Lapataia Bay, where the Pan-American Highway ends. Despite snow and rain, it was refreshing to stretch our legs and enjoy sightings of birds such as upland goose, steamer duck and black-faced ibis.

Back on board, we warmed up and gathered in the lecture theatre for a welcome by Captain Andrus. Tomorrow we cast off and farewell Ushuaia.









Beagle Channel | At Sea

DAY 3 | Monday 4 November 2025

Latitude:
54°53.11' S

Longitude:
67°51.10' W

Course:
100°

Speed:
14.5 knots

Wind Speed:
18 knots WSW

Barometer:
1007 hPa

Air Temp:
6°C

At 0503 this morning we were awoken by the hum of the *Sylvia Earle* engines. The pilot was on board and we would soon be on our way south. Daylight was breaking over Ushuaia, the city slowly awakening, clouds hovering above the snow-covered mountains. nWind and current hindered our first attempt to leave port, but at 0600 with bow thrusters working at full power we moved away from the dock.

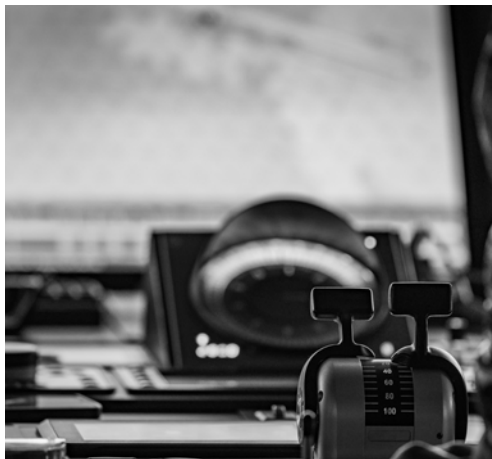
Our first hours were in calm waters as we cruised along the Beagle Channel. This was our chance to watch albatross soar across the ocean. Leaving the channel we entered the Drake Passage. The sea state affected several Expeditioners, reflected in low numbers at lectures and in the restaurant.

For Expeditioners in the kayak program, the morning meant meeting in the mudroom and being fitted with gear: drysuits, booties and gloves. There was excitement as many tried on drysuits for the first time, helping each other close zips and learning about correct layering.

The voyage education program began with a lecture by our on board ornithologist Vicky on seabirds. After lunch we watched the documentary 'Mission Blue', based on our ship's namesake Dr Sylvia Earle, followed by a lecture on oceanography from our on board marine biologist Marcelo. It was a quiet evening on board, most retiring early, ready for another day on the Drake Passage moving closer to the Antarctic Peninsula.





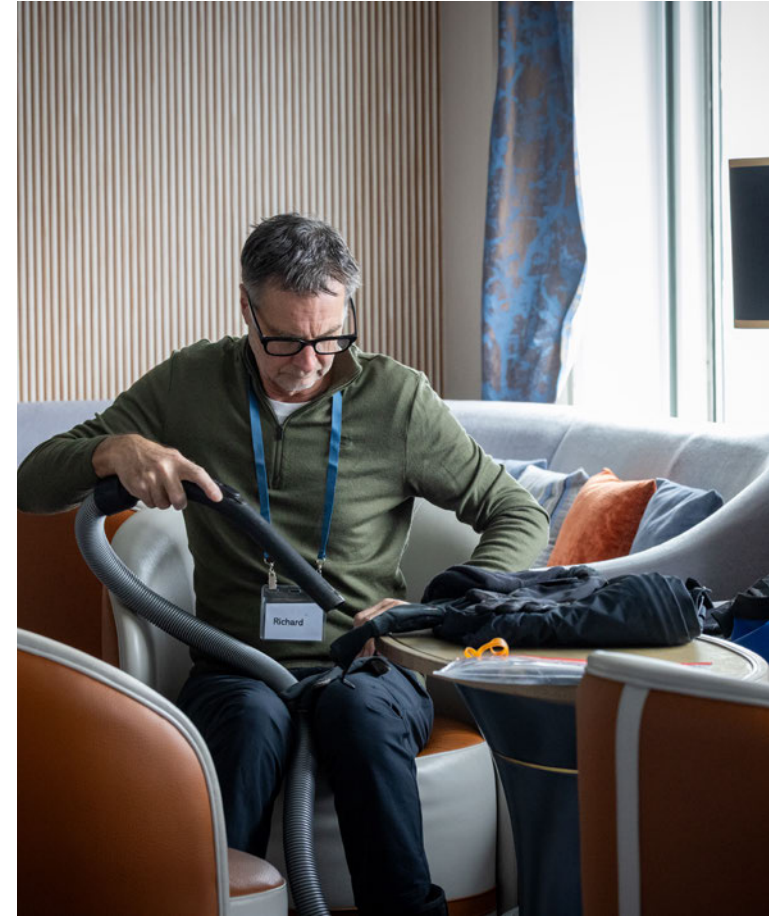


At Sea

DAY 4 | Wednesday 5 November 2025

Latitude: 58°47.8' S	Wind Speed: 16 knots SW	We woke this morning to a thick sea fog that swallowed the horizon and turned the ocean into a world of mist and imagination. The low cloud clung to us all day, giving everything a moody, cinematic feel.	headed albatross appearing like a ghost from the mist. Even when we could not see far, the ocean felt alive.
Longitude: 63°36.6' W	Barometer: 1005 hPa	After breakfast, we gathered for a photography lecture. The session offered tips on composition, lighting, and capturing the drama of the polar environment, a chance to think like professionals before our first landing.	Meanwhile, the Expedition Team practised rope systems for crevasse rescue. Hushed instructions, clinking carabiners, and focused teamwork were all part of keeping us safe when exploring icy terrain.
Course: 153°	Air Temp: 4°C	Then came the big event: biosecurity cleaning. Jackets, boots, and every stubborn bit of Velcro were inspected and vacuumed, ensuring we step ashore tomorrow with gear as pristine as the islands themselves.	The afternoon brought a glaciology lecture from our resident ice enthusiast, a passionate dive into how glaciers move, calve, and sculpt the landscape.
Speed: 12.1 knots		Between fogbanks, glimpses of birdlife lifted spirits: elegant cape petrels skimming the waves and the occasional grey-	While the world outside stayed wrapped in mist, the day was full of learning, laughter, and anticipation. Tomorrow we set our sights on the South Shetland Islands: boots clean, cameras ready, spirits high.





Yankee Harbour | Half Moon Island

DAY 5 | Thursday 6 November 2025

Latitude:

62°33.2' S

Longitude:

59°32.1' W

Course:

245°

Speed:

8.1 knots

Wind Speed:

12 knots NW

Barometer:

993 hPa

Air Temp:

2°C

We woke quite early surrounded by stunning Antarctic landscapes. It is a special feeling to see them for the first time. Towering cliffs, massive glaciers, icebergs and crevasses glowed in shades of blue as we approached Yankee Harbour, our first destination. Here we finally saw blue sky and sun after days of fog, snow and rain.

The first outing was not easy, with winds at 33 knots and gusting, but we still managed to step ashore and saw our first penguins and seals. Yankee Harbour was known to American and British sealers from 1820, soon after William Smith discovered the South Shetlands. The sealing boom was fast, and evidence of that age remains on these islands. Fur seals were taken for pelts, elephant seals for blubber,

boiled in try pots like the one we saw on the beach. Kayakers and the alpine team made their shakedown outings despite high winds and were delighted with the experience.

Once everyone was safely back on board, we repositioned to Half Moon Island. The anchorage was poor with winds rising to 40 knots, so the ship used dynamic positioning, maintaining GPS location with propulsion and bow thrusters. Despite rough conditions, keen Expeditioners went ashore, hiking to viewpoints, observing penguins and even seals with pups.

The day ended with a ship cruise beside Edinburgh Hill, a striking formation of columnar basalt.









Brown Bluff | Herbert Sound

DAY 6 | Friday 7 November 2025

Latitude:
63°24.5' S

Longitude:
56°49.3' W

Course:
177°

Speed:
5.8 knots

Wind Speed:
1.5 knots NW

Barometer:
983 hPa

Air Temp:
1°C

This morning we woke gently to the calmest seas since leaving Ushuaia. Overnight the ship travelled across the Bransfield Strait to Antarctic Sound. Calm winds and sea meant a smooth landing by Zodiac onto the black cobblestone beach of Brown Bluff, a site on the Antarctic continent featuring Adélie penguins, the colonies reaching high up the hillside. The penguins were busy building nests, searching for and deliberating over the perfect pebble to add to their pile.

Brown Bluff also features towering red-brown tuff cliffs, the dominating rock face a remnant of a sub-glacial volcano. The beach was scattered with boulders eroded into striking shapes, formed from the ancient volcano. Kayakers paddled

along the shoreline, viewing the cliffs from the water with large tabular icebergs on the horizon. Meanwhile, the Shackleton crossing team practised crampon and glacier travel skills on the hard ice flanking the bluff.

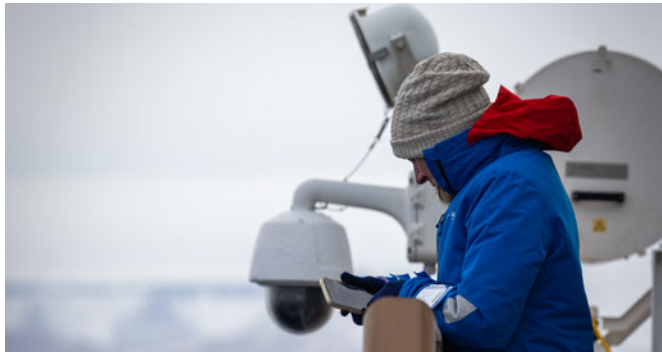
In the afternoon we spent time on deck as the *Sylvia Earle* ventured through icy Fridtjof Sound. It was mesmerising watching the bow cut through brash ice and seeing the frozen sea rise and fall with the swell.

On reaching Herbert Sound we encountered fast ice, anchored to the coast and unmoved by wind or currents. The ship edged alongside and we stepped out onto the ocean, 176 metres above the floor.









At Sea | Penguin Island

DAY 7 | Saturday 8 November 2025

Latitude:

62°47.5' S

Longitude:

57°44.6' W

Course:

350°

Speed:

7.8 knots

Wind Speed:

9 knots E

Barometer:

982 hPa

Air Temp:

1°C

I awoke this morning not in my tent on Snow Hill Island, but aboard a passenger vessel. I am told the year is 2025. Remarkable! I was astonished to learn that these modern voyagers begin their day by watching whales for fun. Several fin whales appeared ahead of the ship, sleek giants that nobody suggested harpooning. Civilization, it seems, has advanced.

After breakfast, a learned woman named Kelsey delivered a lecture on my Expedition. How strange to see a real woman in Antarctica, and stranger still to be warm and comfortable in the lecture theatre while re-living the epic of my ship, the Antarctic, becoming less buoyant.

I went outside for a smoke and saw something peculiar. A ship in Antarctica has a swimming pool, and the crew

were shovelling water out and filling it with foam mats. This was meant to recreate the hut my men over-wintered in at Paulet Island. A man with a New Zealand accent and coffee grounds on his face claimed to be me. I might have been offended had he not been so handsome.

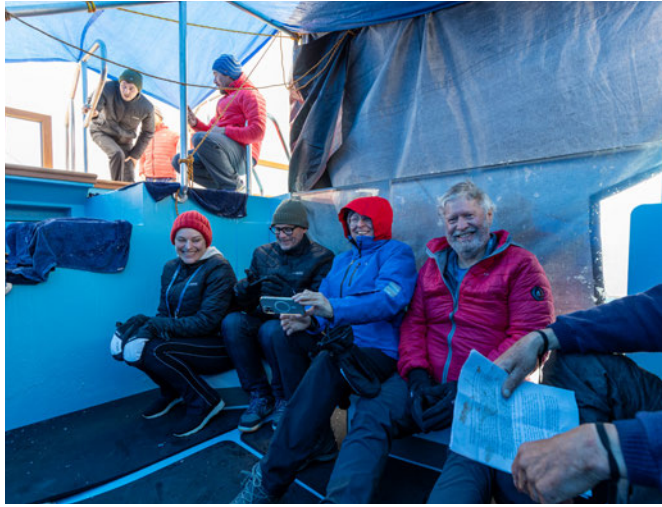
He read from Captain Larsen's diary about penguin soup, sleeping bags stiff with frost, and our sweet cat, played here by a yoga-ball.

In the afternoon, I joined a Zodiac excursion around Penguin Island. The cinder cone's alternating black scoria and orange ash made my heart flutter.

Tomorrow the ship sails north toward Elephant Island, where another explorer will take his turn in the spotlight.









Gibbs Island | Elephant Island

DAY 8 | Sunday 9 November 2025

Latitude:
61°23.7' S

Longitude:
50°29.9' W

Course:
1010°

Speed:
9.8 knots

Wind Speed:
14 knots SE

Barometer:
988 hPa

Air Temp:
0°C

An hour after sunrise, at 0530 a.m., we began the day in the middle of the Southern Ocean, leaving behind the Antarctic Peninsula.

With the Zodiacs, we cruised along the southeast side of Gibbs Island. There was some swell, but conditions were good enough to observe penguins, fulmars and petrels, as well as a rocky cliff coastline with large icebergs stranded along the shore. On the horizon, we caught our first glimpse of one of the most emblematic places for Shackleton's team: Elephant Island.

After two hours of navigation, we arrived at the southwest side of Elephant Island, in the area of Endurance Glacier. We made a landing, and the abundance of wildlife along the shore, combined with the scenery, made it a special

Antarctic experience. Surrounded by elephant seals and penguins, the Alpine team and Shackleton crossers completed a trek along the glacier, enjoying views of misty mountains and bays. This place seemed perfect for survival, with water and abundant wildlife, yet more than a century ago it was probably covered by ice.

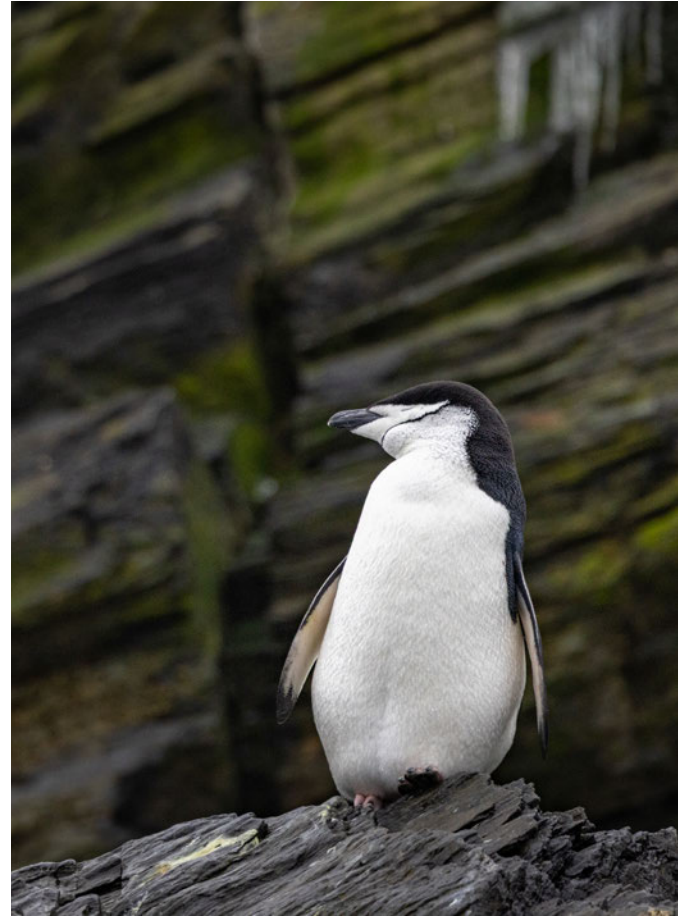
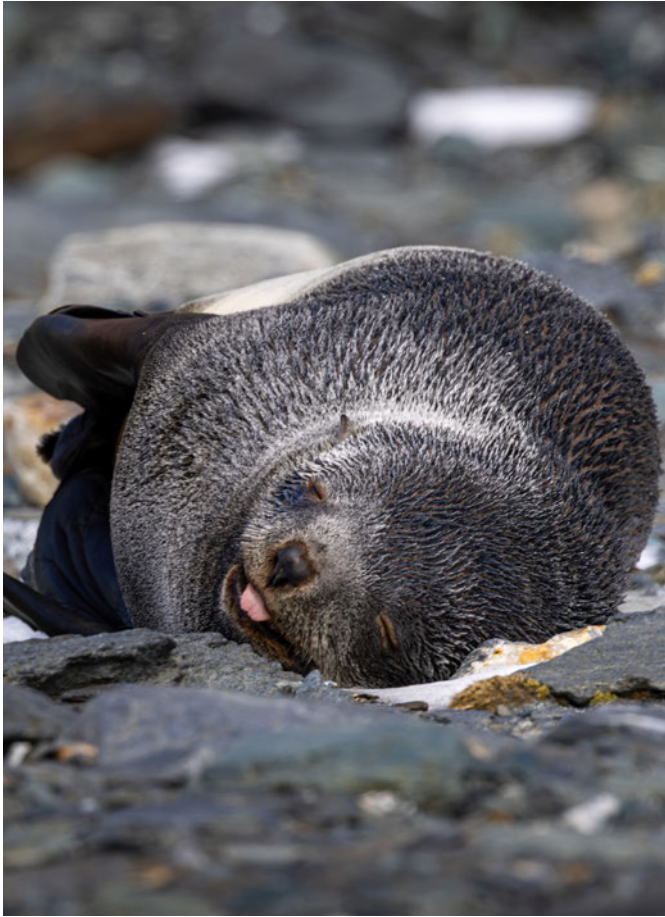
After lunch, we continued navigating around Elephant Island and encountered sei whales displaying feeding behaviour.

Arriving at Point Wild, one of the most iconic sites in Shackleton's story, the sea state looked promising. We were lucky to step ashore at the very place where Shackleton's men were stranded for nearly ten months. Standing there, imagining their endurance, was humbling. Today was an unforgettable chapter in our adventure.

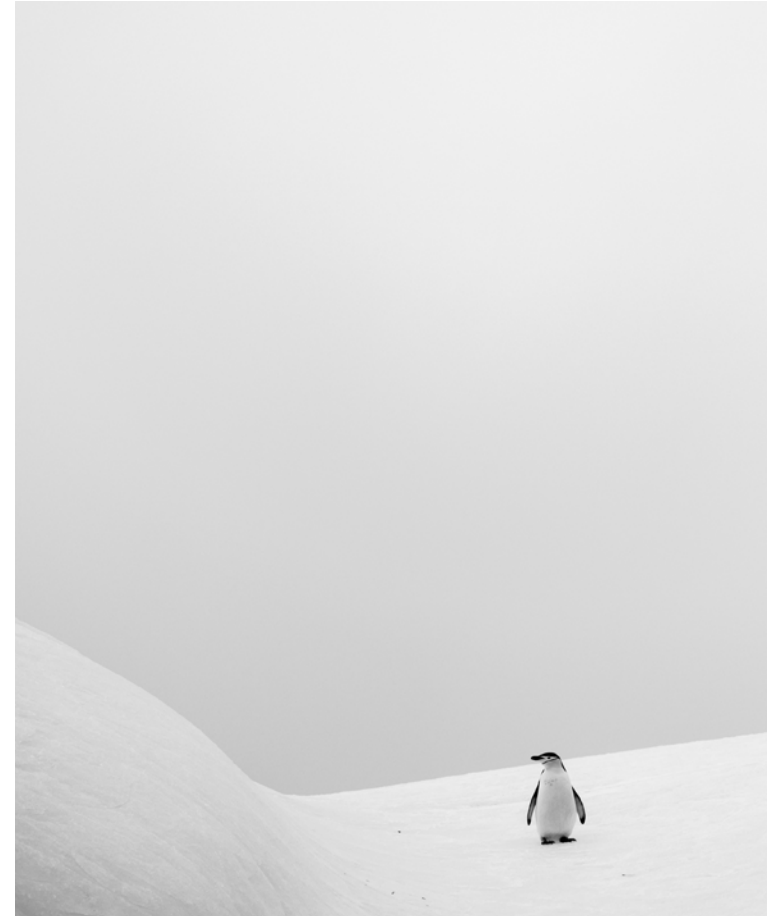














At Sea

DAY 9 | Monday 10 November 2025

Latitude:
59°35.2' S

Longitude:
50°38.2' W

Course:
52°

Speed:
15.3 knots

Wind Speed:
20 knots NW

Barometer:
988 hPa

Air Temp:
-1°C

A chance for a well-deserved sleep-in after an incredible day at Elephant Island yesterday. The three excursions with an early start paid off with an unforgettable day we will all remember. Lying in bed for a later breakfast was an option taken by many, including several of the Expedition Team.

During the night and morning, the Captain had the *Sylvia Earle* firing on all cylinders. In favourable seas the distance to South Georgia across the Scotia Sea was narrowing by the minute. Despite a gloomy day with low cloud, the ship was full of activity with lectures, boat building and cloud survey.

A highlight was the Shackleton lecture from our Historian Kelsey. As always the 'Boss' and his crew and tales from the *Endurance* were popular, drawing a large crowd.

The fascination of the audience meant it ran overtime as questions flowed. For those enthralled by the adventure there was a bonus opportunity to try out an experience aboard a replica of the James Caird that Ashley and others had constructed, in the comfort of the lecture theatre.

The day followed a familiar theme in Aurora Expeditions where ample food was provided by the hotel team. Some opted for a short nap before the afternoon's lecture by Marcelo on invasive alien species and biosecurity. This was informative, especially as we must clean all gear tomorrow before landing on South Georgia.

All in all, a day that slipped by like the ship crossing the Scotia Sea at a great rate of knots.





At Sea towards South Georgia

DAY 10 | Tuesday 11 November 2025

Latitude:
56°33.5' S

Longitude:
42°54.9' W

Course:
47°

Speed:
10.6 knots

Wind Speed:
6 knots SW

Barometer:
989 hPa

Air Temp:
2°C

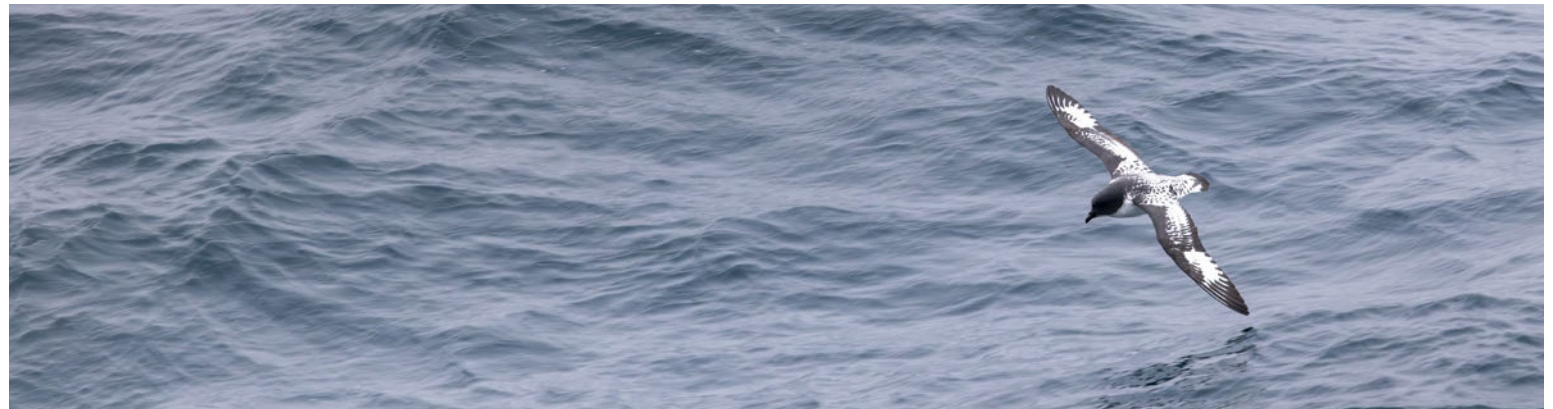
Today we are making our way northwards from Elephant Island towards South Georgia, following the route of the James Caird across the rolling swells of the Scotia Sea. After tracing the path of the crew of the wrecked *Endurance* over the ice of the Weddell Sea to the relative comfort of Point Wild, we are now at the mercy of the Southern Ocean, travelling through the latitudes known as the Furious Fifties.

Accompanied only by southern fulmars, cape petrels and Antarctic prions skimming the waves in the ship's wake, we can only imagine the feeling on board the cramped lifeboat as Shackleton, Worsley, Crean, Vincent, McCarthy and McNish made their way north in hope of saving their shipmates. Snatching brief moments of sleep among the boulder ballast, between bailing duties and chipping frozen

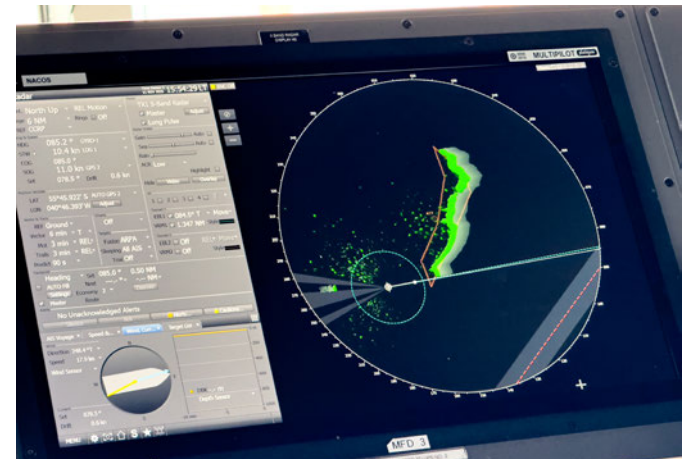
seaspray from the jury-rigged mast and sails, their journey was relentless.

In the luxury of the lecture theatre we explored the geological origins of the ocean basin with Sydney and met the marine mammals that live there with Marcelo. An introduction to the sights awaiting us on South Georgia by Sir David Attenborough created excitement, not diminished by a second round of biodiversity boot scrubbing, backpack brushing and Velcro vacuuming.

The afternoon brought fresh air on deck beside iceberg A77, a massive tabular berg calved from the Princess Martha Coast in 2021. Its near sheer walls provided a spectacular backdrop.







Pegotty Bluff | Expedition Afternoon

DAY 11 | Wednesday 12 November 2025

Latitude: 54°13.6' S	Wind Speed: 4.7 knots SW	<p>We awoke this morning to the calm waters of King Haakon Bay, a long fjord sheltered from the windy southern coast of South Georgia. The first order of business was to drop off the mountaineering team, aiming to cross the island following the route of Shackleton, Crean and Worsley. Looking outside as the wind gusted over 35 knots and seabirds swirled above the waves, I wondered how the trekkers were faring. Hopefully they were enjoying their freeze-dried dinner and staying warm.</p> <p>South Georgia's shores greeted us with oof-choofing fur seals galloping to and fro. King penguins waddled politely along the shore, eyeing each Expeditioner with scepticism. Giant petrels preened in the sand while others hovered above nests in the tussock grass. Elephant seals and their</p>	<p>weaners wallowed in riverbeds. 'What's that smell?' our geologist Sydney asked, inhaling deeply. It was the rich aroma of fur seal pheromones. The beach masters sat proudly on the shore, guarding their harems, whiskers glistening in the sunlight.</p> <p>Kayakers patrolled the coastline, while keen walkers hiked to the saddle overlooking glaciers. Sydney traced striations in the rocks and led hikers to a neighbouring moraine, where they met a curious squad of penguins.</p> <p>In the afternoon the wind picked up, but we spotted Cave Cove, where Shackleton's men first landed after their 16-day voyage. Workshops filled the afternoon until orcas arrived, stealing the spotlight.</p>
Longitude: 37°33.0' W	Barometer: 995 hPa		
Course: 48°	Air Temp: 2°C		
Speed: 10 knots			











Salisbury Plain | Prince Olav Harbour

DAY 12 | Thursday 13 November 2025

Latitude:

54°01.3' S

Longitude:

37°07.1' W

Course:

137°

Speed:

9.6 knots

Wind Speed:

13 knots SE

Barometer:

970 hPa

Air Temp:

4°C

We woke far earlier than usual, to the gentle pitter-patter of rain. The Zodiacs went down for a sunrise adventure, and off we went, rain-soaked and determined, toward Salisbury Plain. We landed safely, though nowhere near our target. The king penguin colony sat a full nautical mile away, staring back as if to say, 'Good luck, humans.'

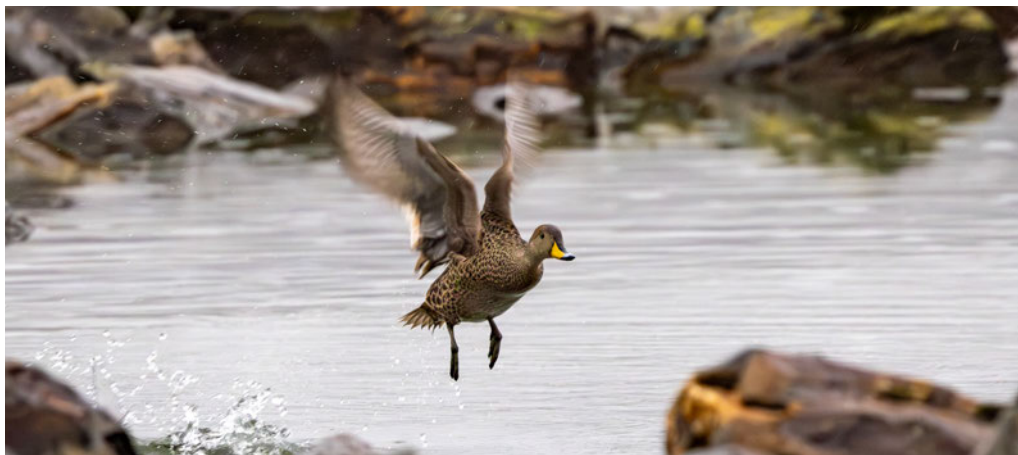
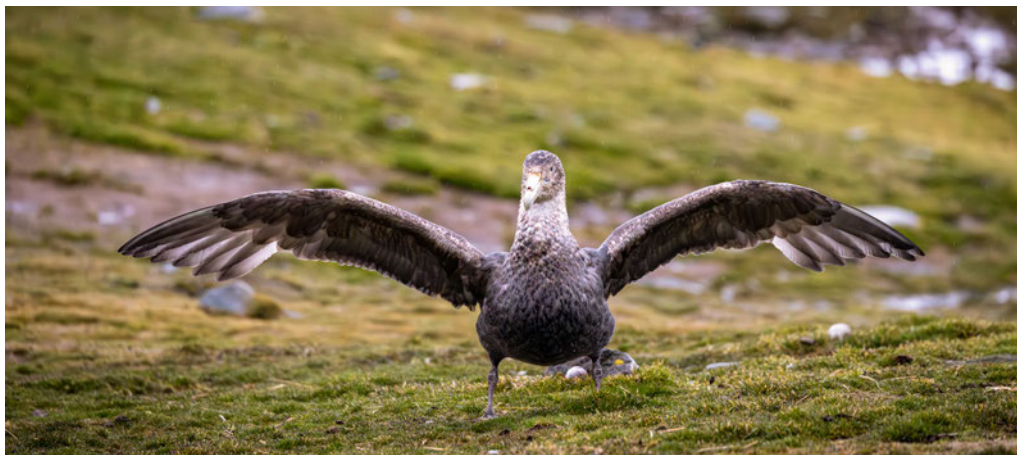
Dressed for the elements, we began our slow trek, tiptoeing around wildlife with a grace best described as carefully chaotic. Then Marcelo's legendary clapping parted the seals, bringing us to the colony's edge. King penguins waddled in and out of the surf, pausing to give us judgmental looks. The fur seals tolerated us until departure, when the Expedition Team guided us through the seal gauntlet and back to the Zodiacs.

After a freezing, wet morning and a warm breakfast, we headed to Olav Harbour for a mid-morning Zodiac exploration. More rain greeted us, but it did not stop us. In Elephant Lagoon the fur seals were oddly quiet, and after a peaceful wander we continued to Prince Olav Harbour, where old whaling relics still sit along the coast.

By late morning the wind was picking up fast. We returned for another hot meal, just in time to collect the mountaineers in Possession Bay. With gusts at 45 knots, the kayak team heroically brought them back.

Once everyone was on board, we turned toward Fortuna Bay. With winds still over 40 knots, the grand exploration became a polar nap and cocktails.









St Andrews Bay | Cobble's Cove | Godthul to Sandebugta Hike

DAY 13 | Friday 14 November 2025

Latitude:
54°24.2' S

Longitude:
36°06.0' W

Course:
185°

Speed:
4.2 knots

Wind Speed:
20 knots SW

Barometer:
973 hPa

Air Temp:
4°C

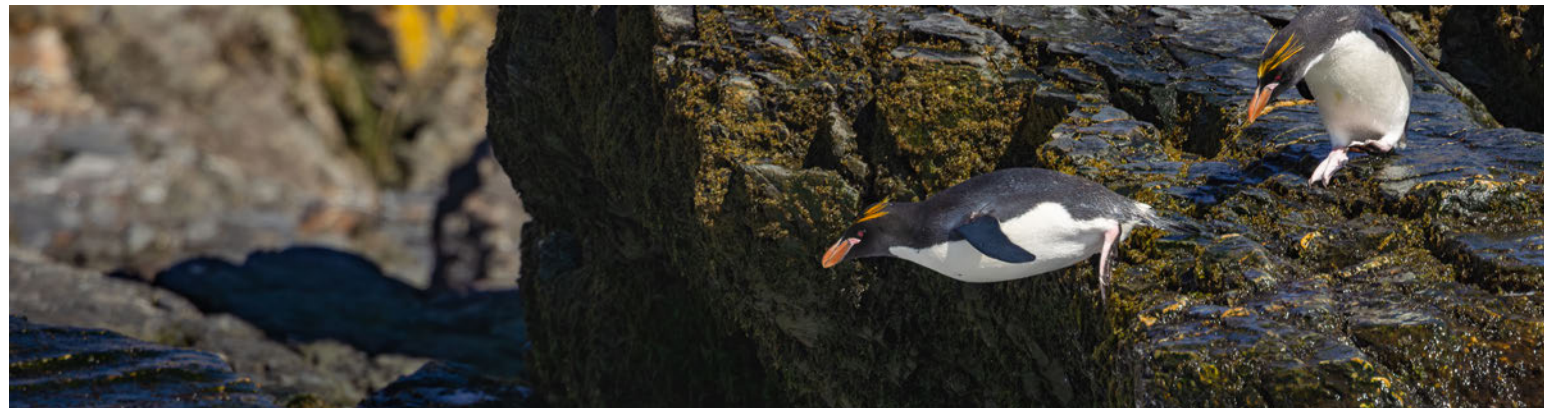
This morning aboard the *Sylvia Earle*, we arrived at St Andrews Bay, home to the largest king penguin colony on South Georgia. The fierce wind and swell made you question your choices, until tens of thousands of penguins reminded you why you were there. With brave hearts and damp humour, everyone loaded into the Zodiacs. A lively stern landing later, we were on shore, taking in the endless sea of kings, their calls rolling across the beach like an Antarctic choir.

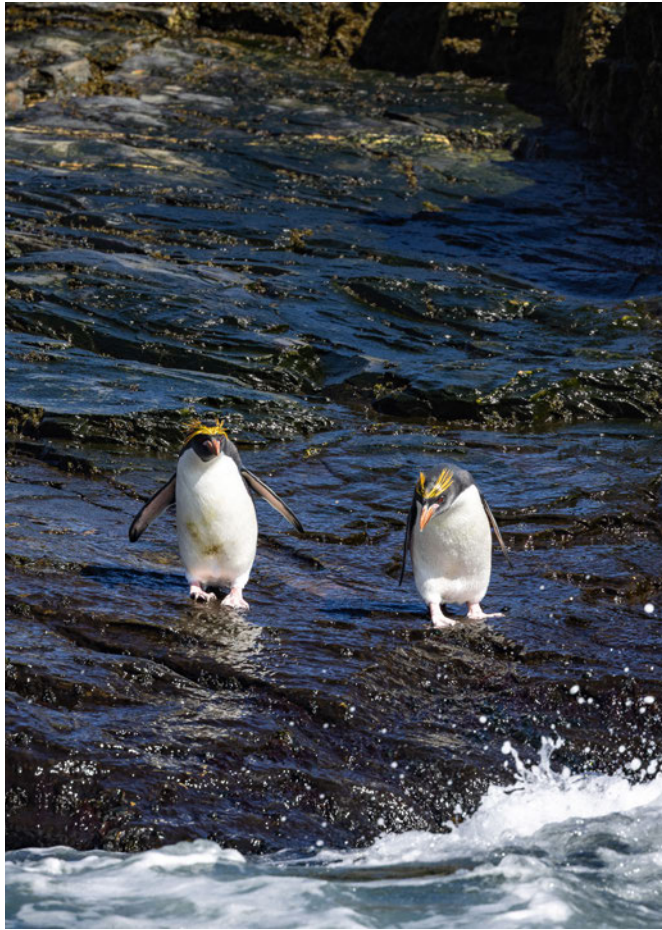
In the afternoon we set off for Godthul. From there we headed to Rookery Point, where a small but charismatic group of macaroni penguins awaited us, complete with their yellow crests. On the way back we detoured into Cobblers Cove and were rewarded with the sight of a

spectacular iceberg. Its shape vaguely resembled the *Sylvia Earle*, thanks to a natural X-Bow curve carved by wind, swell and time.

The ship then repositioned to Sandebugten to collect guests who had hiked across from Godthul, a scenic walk enhanced by soft evening light and fur seals lounging along the shore.

Once everyone was safely back on board, the energy shifted from adventurous to fearless: it was time for the polar plunge. One by one, guests jumped into the freezing water, emerging with shrieks, laughter and the badge of honour only the Southern Ocean can provide. Today was bold, busy and unforgettable.











Grytviken | Leith | Stromness

DAY 14 | Saturday 15 November 2025

Latitude:

54°18.7' S

Longitude:

56°22.1' W

Course:

Speed:

At Anchor

Wind Speed:

10 knots S

Barometer:

977 hPa

Air Temp:

4°C

The day began with a crisp morning landing at Grytviken, one of South Georgia's best-preserved former whaling stations. After we passed biosecurity inspection to protect the island's fragile ecosystem, we stepped ashore into a place where rusted relics stand beside sweeping mountain scenery.

Every building offered a unique experience, including the museum, a small but compelling archive of the island's human and natural history. Another housed a replica of the James Caird, the tiny lifeboat used by Shackleton during his legendary voyage from Antarctica. Many paused to imagine the storm-lashed journey that made the vessel famous.

The post office buzzed with cheerful activity as postcards were filled out to travel from one of the southernmost post offices in the world. The morning also included a wedding

at the church! The visit concluded at the cemetery, where the group gathered at Shackleton's grave. Here Kelsey brought us together and we raised a glass in a traditional toast to 'The Boss,' honouring the explorer whose grit and leadership remain woven into the island's history.

In the afternoon the voyage continued to two additional whaling stations. At one stop, adventurous passengers hiked from Leith Harbour to Stromness, set against rugged ridgelines and valleys contrasting with industrial remains.

As the day closed, everyone regrouped aboard for recap, champagne and a wedding photo, followed by celebratory cake. History, exploration and shared joy made it a memorable highlight of the voyage.









At Sea

DAY 15 | Sunday 16 November 2025

Latitude: 54°12.6' S	Wind Speed: 25 knots SW	<p>Today marked our final day in South Georgia. We have three days of navigation ahead as we make our way back toward Ushuaia, giving everyone time to reflect on the extraordinary experiences of this voyage through the northern Antarctic Peninsula and the wildlife-rich shores of South Georgia.</p> <p>Although a Zodiac excursion was planned for the morning, strong winds prevented us from safely launching the boats. Ashley, our Expedition Leader, quickly adapted the schedule and began with an in-depth presentation about the <i>Sylvia Earle</i>, discussing its design philosophy and technological features. Her talk offered a deeper understanding of the ship that has carried us through ice, waves and remote waters.</p>	<p>Afterwards, guided visits to the bridge gave Expeditioners the rare opportunity to see the operational heart of the vessel, meet officers on duty and learn about navigation systems that allow safe travel through polar regions.</p> <p>The day continued with onboard lectures. Richard led a photography session filled with striking Antarctic images and insights into composition and light. Dot followed with a historical overview of whaling, and eventual protective measures. Meanwhile, Vicky conducted a cloud-watching workshop, identifying cloud types and their link to weather.</p> <p>In the evening we gathered indoors for a lively barbecue, with conversation, music and a strong sense of community. Though the weather kept us from going ashore, it was a day filled with learning, connection and exploration.</p>
Longitude: 37°34.6' W	Barometer: 983 hPa		
Course: 250°	Air Temp: 0°C		
Speed: 10 knots			

At Sea

DAY 16 | Monday 17 November 2025

Latitude: 55°05.3' S	Wind Speed: 5 knots SW	<p>This morning greeted us with a rare gift: a perfectly calm sea stretching out like polished glass beneath a sky untouched by wind. The ship glided forward with quiet confidence, leaving only the faintest ripple in its wake. Many lingered on deck, soaking in the gentle stillness that felt suspended in time.</p> <p>Later in the morning, we gathered in the lounge for Kelsey's presentation on the history of exploration in the Ross Sea, framed within Shackleton's legendary Endurance tale. The era came to life with vivid storytelling; ships battling pack ice, men pushing limits, and the indomitable spirit that defined the Heroic Age of Antarctic Exploration. It was impossible not to feel renewed appreciation for the land, and for those who ventured here long before us.</p>	<p>In the afternoon we continued our immersion with a documentary on the whaling industry. Though sobering, it offered perspective on the complex relationship between humans and these polar waters, contrasting past exploitation with today's conservation efforts.</p> <p>Between activities, the restaurant crew ensured no one went hungry. Lunch offered fresh salads, hearty soups and warm dishes, followed by teatime pastries and scones. Dinner presented beautifully crafted options, each plate thoughtfully prepared.</p> <p>We closed the day with the daily briefing and recap. Maps appeared, weather updates were shared, and the Expedition Team outlined adventures ahead with enthusiasm.</p> <p>As night fell, the sea remained calm, holding the day's stories gently on its surface.</p>
Longitude: 46°42.9' W	Barometer: 989 hPa		
Course: 261°	Air Temp: 1°C		
Speed: 13.6 knots			

At Sea towards Ushuaia

DAY 17 | Tuesday 18 November 2025

Latitude: 56°38.5' S	Wind Speed: 38 knots SE	Grey skies, 3.5-metre seas and sweeping winds made for a great bird day, with sightings of light-mantled albatross, white-chinned petrel, cape petrel, black-browed albatross and southern royal albatross.	by Dot in the lecture theatre, where five teams battled for the glory of <i>Sylvia Earle</i> Trivia Champions. For the past few days we have viewed and voted for favourite photos in the South Georgia and Peninsula competitions. Carlos announced the winners at recap this evening across categories of landscape, wildlife, people and other.
Longitude: 55°55.2' W	Barometer: 980 hPa	The education program continued with a lecture from our onboard glaciologist Sydney on Antarctic past lives and buried geology. Fellow passenger Derek also gave a presentation on the aurora borealis, sharing photographs from Alaska to Norway and explaining how sunspots affect when and how we see the aurora dancing across the night sky.	We also wrapped up Citizen Science, with Vicky recapping cloud and bird surveys and encouraging us to continue as citizen scientists at home.
Course: 263°	Air Temp: 0°C	In the afternoon we watched 67° South, a 1955 film about scientists and cartographers on Horseshoe Island, below the Antarctic Circle. This was followed by Team Trivia hosted	Tomorrow some of us present ' <i>Humans of Sylvia Earle</i> ', with support from the Expedition Team.
Speed: 13.2 knots			As of recap we still have 260 nautical miles to reach Cape Horn. Our Antarctic adventure sails on.

At Sea | Cape Horn

DAY 18 | Monday 19 November 2025

Latitude: 56°29.7' S	Wind Speed: 9 knots s	<p>We've reached our last day of sea days, and today the <i>Sylvia Earle</i> rolled smoothly through calm waves. It was a day of reflection, connection and exchanging contacts before we part ways tomorrow in Ushuaia.</p> <p>One of the most special moments came during our <i>'Humans of Sylvia Earle'</i> hour, where six Expeditioners shared their stories. Keith spoke of walking the Bibbulmun Trail while raising money for cancer research; Helen described finding her artistic voice in the Scottish mountains; Jeff recounted his journey as a pilot on the first flight from Perth to London; Mike humorously told of his connection with Shackleton; Paul described a first ascent of Adi Kailash in India; and Lesley made a moving appeal about listening to science.</p>	<p>Later we gathered in the lecture theatre to farewell the Expedition Team. Ashley recapped our voyage before reading love letters written between team members. A tear in Tarn's eye showed how emotional the moment was.</p>
Longitude: 64°21.7' W	Barometer: 1001 hPa		<p>Carlos then presented his slideshow, highlighting striking memories from our time together. Sydney's cheeks glistened with tears, perhaps at the sight of one of her favourite rocks.</p>
Course: 291°	Air Temp: 2°C		<p>Thanks to Marcelo, the Bridge Team and Ashley, we enjoyed a ship cruise past Cape Horn. Deck 8 was full of energy as we relived tales of explorers who rounded the Horn. Albatrosses coasted through the sky as our last evening together closed. It was a pleasure to sail with all of you.</p>
Speed: 12.1 knots			

Ushuaia

DAY 19 | Thursday 20 November 2025

Latitude:
54°48.8.' S

Longitude:
68°16.1' W

Course:
Alongside
Speed:
Alongside

Wind Speed:
14 kts SW
Barometer:
1002 hPa

Air Temp:
6°C

Aurora Expeditions send out a big thank you to you all for your great humour, infectious enthusiasm and smiling faces. It was a pleasure having you all on board and being able to share some of the pleasures that the icy south has to offer. May your memories live long and bright.

We have travelled 3254 nautical miles together.

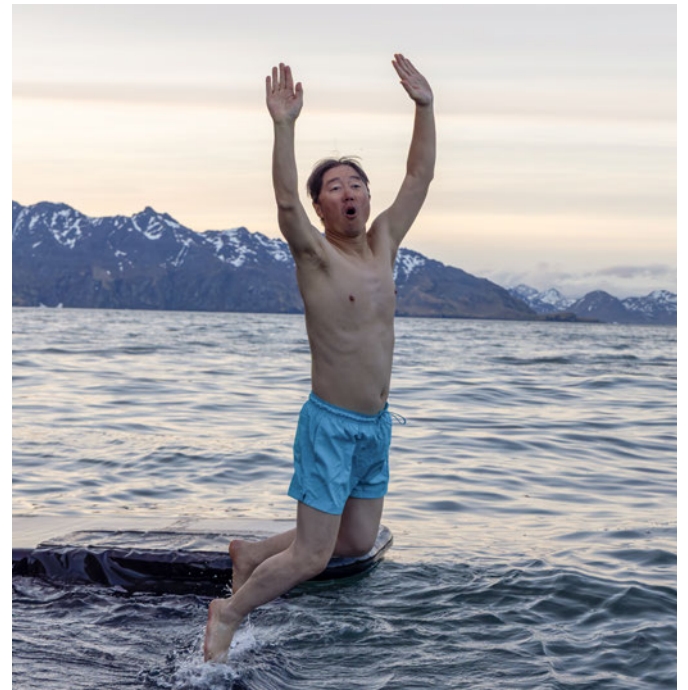
BBQ



Polar Plunge







Creativity

Artwork by *Sylvia Earle* crew member Agus Triwibowo

The Crossing of the Drake Passage Poem by Cheryl Armstrong

The Drake. I have liked it as a birth of something spectacular.

The anticipation of the Trip

the calm as the surges come and go with little effort

then the labour starts

The surges get bigger and stronger

thoughts of wanting to get off

medication and vomit bags

thoughts of wanting to get off

medication and vomit bags

Then the calm and realization of the most beautiful thing to behold

"Antarctica"



Citizen Science

Project	Project Runs	Overview
Happywhale	n/a	Photographs submitted to Happywhale from <i>Sylvia Earle</i> account from an orca encounter on the south side of South Georgia. Outcome pending.
NASA GLOBE Cloud	5	A workshop on cloud spotting held in the observation lounge, followed by a first survey. In total, 4 cloud surveys carried out from the ship, 3 matches with satellite flyovers to date. An opportunistic survey was carried out on shore at Half Moon Island to record lenticular clouds, using the CSCs own account.
Southern Ocean Seabird Survey (eBird)	4	A workshop on seabird identification was held to point out the most common species and give identification tips before the first survey. In total, 4 Southern Ocean Seabird surveys were carried out from the ship during the sea passage from Usuaia to the South Shetland Islands, from Elephant Island to South Georgia, and from South Georgia to Cape Horn. Additional time was spent out on deck watching and photographing birds, especially on the last two sea days when the sea state was good and there were abundant albatrosses of various species close to the ship.
EyeSea	n/a	Marker bouy (marine waste) recovered from the shoreline between Leith Harbour and Stromness in South Georgia. The limitations of the EyeSea app mean that it is not possible to upload images of marine waste or recovered materials with accurate location data, unless at the moment of collection. GPS location data cannot be corrected, which makes the app unusable in many situations, and not really a participatory CS project for expeditioners. Feedback has been provided to the app developers in previous seasons, but there have been no updates to the app so far.
SnowAlgae	1	One image of snow algae by the penguin colony on Half Moon Island submitted by the CSC on own account, but the project hadn't been introduced at the intro recap due to being early in the season.





Kayaking Log

Guides: Ivan Klochkov, Eduardo Larranaga, Pablo Passera

6 November 2025, AM: Yankee Harbour – 2 km

It was our first paddle in Antarctica! Even though it was windy, we managed to find a sheltered spot in Yankee Harbour. We towed our kayaks to the lagoon and did a little shakedown paddle, getting familiar with the gear and steering. Our team did a great job navigating in the wind and small choppy waves. Then we landed on the beach and saw our first penguins. A great start to the trip!

7 November 2025, AM: Brown Bluff – 3 km

Our second paddle in Antarctica was at Brown Bluff, a spectacular spot in the Antarctic Sound. Often it is too exposed to paddle here, with little shelter from wind and swell. Fortunately, this morning the conditions were favourable. We started paddling near the glacier, to explore the coastline among the ice

and rocks. We all enjoyed this unique volcanic landscape and amazing geology, which is home to thousands of Adélie penguins. After finishing the excursion, we went ashore to observe the Adélie penguins up close.

8 November 2025, PM: Penguin Island – 4.9 km

Our final paddle in Antarctica took us to remote and striking Penguin Island, a lone volcanic cone rising from the waters of the Bransfield Strait. Conditions were far from ideal: steady winds swept across the area, and the exposed coastline churned up large, restless waves. We embraced the raw energy of this wild place. As we paddled along, we were treated to the presence of two whales. We did not see their bodies, only the powerful blows rising above the surface, as the swell was so high. Even so, those brief signs of life were enough to fill us with awe. A challenging day on the water, but an unforgettable one.

Number of Kayakers: 19

Total Paddle Outings: 8

Total Distance Paddled: 33 km

Kayakers:

Keiko Uehara Blitz

David Blitz

Trevor Francis

Lesley Francis

Richard Fryer

Helen Fryer

Philippa Reid Dalglish

Robin Dalglish

Margaret Kane

Elena Frey

Antonia Gwynn-Jones

Janine McEwan

Mitchell Martyna

Katheryn Martyna

Kathleen La Porte

Lucas Aykroyd

Paul Boyette Jr

Joshua Urban

Amanda Urban

12 November 2025, AM: Pegotty Bluff – 5 km

As we arrived in South Georgia, we had the chance to paddle in King Haakon Bay. The weather was perfect for paddling: glass calm, with bright sunshine. We hit the water next to a group of small islets and explored the shallow waters around them. Straight away we were mesmerised by the abundance of wildlife. There were dozens of elephant seals, fur seals, king penguins, cormorants, giant petrels and other animals all around. We enjoyed the stunning backdrop of turquoise glacier and towering cliffs. Towards the end of our session the wind picked up, making it a challenge to maintain position as we boarded the Zodiacs, but everyone did a great job helping each other.

13 November 2025, AM: Salisbury Plain – 4 km

At 04.00 we were ready to kayak in

Salisbury Plain, one of the biggest penguin colonies in South Georgia. Once in the Zodiac we got into the kayaks at Start Point, a rocky point on the west side of the bay. The morning was rainy with low clouds. We kayaked among kelp forest, with fur seals moving around and swimming between them. Once in the open bay we began seeing king penguins along the shore, first in small groups and then, as we turned a point, we were amazed by the sheer number of penguins on the shore and in the water. The whole beach was covered, with large groups swimming close to shore. It was a spectacular moment. After an hour we returned to the Zodiac to make a landing and see them from land.

13 November 2025, PM: Prince Olaf Sound – 3 km

One of the finest places for kayaking in all of South Georgia. The wind forecast told us that by midday the

gusts would rise sharply, so as soon as we set off, we tucked ourselves into a narrow, sheltered bay with wonderfully calm waters. It was a beautiful spot, perfect for observing fur seals and massive elephant seals lounging on the rocks just a short distance away. We paddled for a little over an hour, careful not to let the increasing wind make our return to the ship difficult. We wrapped up just in time. The moment we boarded the Zodiacs, the wind began to roar with full force. A narrow escape and a memorable outing.

14 November 2025, PM: Godthul – 4 km

The ship entered the shelter of Godthul, a beautiful bay protected from swells and wind. We had fantastic weather during this outing. We launched kayaks next to the shallow beach full of fur seals and elephant seals. Kelp fields surrounded us, fun to paddle through

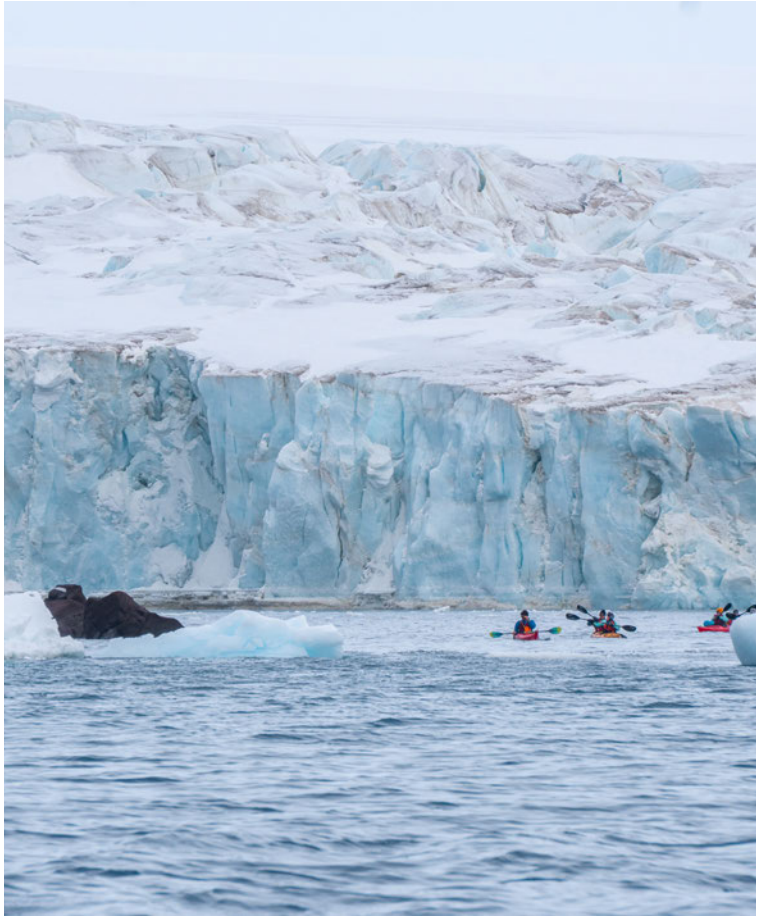
and fascinating to observe as they absorbed disturbances on the water's surface. We followed the coastline, played in gentle swell and approached some amazing waterfalls. The colours around us were bright and vibrant. The most relaxing outing of the trip.

15 November 2025, PM: Leith Harbour to Stromness – 7 km

We kayaked from Leith Harbour at Clear Point, passing many fur seals on the calm side of the bay. Crossing the Leith whaling station to Harbour Point, we began to feel the swell from the fjord entrance. With the ship repositioning, we continued to the next bay, crossing towards Grass Island where sheltered waters returned. We saw Stromness whaling station and the last section of the Shackleton crossing with the waterfall. More fur seals appeared here. We passed the station and approached the ship, happy to end the trip with such an amazing outing.











Shackleton Crossing Log

Guides: Tarn Pilkington, Bronwen Waters, Dan Phillips

3 November 2025, PM: Martial Glacier, Ushuaia

Distance: 3.5 km | Ascent: 200 m | Time: 2 hrs 43 mins

Winds delaying our departure with 7 m seas out the Beagle Channel gave us the chance to explore the impressive mountain features guarding Ushuaia from severe gale westerlies. We enjoyed a snowy walk in forest, making our way from the ski lift base towards the remnants of the Martial Glacier. Locals made the most of late season snowfall with skis and boards while we trudged up the trail with axe and crampons onboard. Breaking trail in knee- to waist-deep snow soon became avalanche training. A park ranger reported around 2 m of snow had fallen in 48 hours, perfect for transceiver practice. Strong north-west winds tested our hardiness and ability to operate in arduous conditions.

6 November 2025, AM: Yankee Harbour, South Shetland Islands

Distance: 2.5 km | Ascent: 100 m | Time: 1 hr 33 mins

Our first outing on ice with crampons and ropes took place along a stunning tidewater glacier coastline. We found a rare relief in the ice walls to access the glacier, rigged our gear, clipped into ropes and headed up the slope. After just under an hour of walking we reached a high point on the narrow neck of Greenwich Island. This provided views into Discovery Bay to the north and the Chilean base, Prat Station, across the bay. A scenic walk down the hill brought us to our Zodiac pick-up. One down, many more to go.



Number of Climbers: 7

Total Outings: 8

Total distance walked:
54.22km

Total elevation ascended:
1528m

Climbers:

Jakob Bolin

Jonathan Bolin

Odd Bolin

Andrew Denny

Michelle Hemmings

Joe Oler

Paul Zuchowski

6 November 2025, PM: Half Moon Island, South Shetland Islands

Distance: 3.32 km | Ascent: 97 m | Time: 2 hrs 4 mins

A short crossing delivered us to the volcanic caldera of Half Moon Island. We traversed from the north-eastern tip to the penguin rookery in the south, testing our snowshoes and adjusting to their awkward stride. Moss and lichen covered the rocky bluffs where skuas and terns flew overhead, guarding nests. We continued over the island's highest point and down to the Argentine base on the broad pebbly beach. Here we joined others visiting the penguin rookery at the end of the island.

7 November 2025, AM: Brown Bluff

Distance: 3.35 km | Ascent: 135 m | Time: 2 hrs 24 mins

Our first and only continental landing saw us exploring below towering volcanic columns and chunks of conglomerate rock. Crampons were the choice as we moved past inquisitive gentoo and Adélie penguins at the edge of their rookery to the east. We forged west around the headland to a fan of glacial ice, managing ropes carefully as we ducked and weaved through the snow-covered crevasses. We escaped without anyone falling in unwillingly, a good day in anyone's book.

7 November 2025, PM: Fast Ice, Weddell Sea

A quick step onto frozen ocean brought a rare sighting of an emperor penguin, special in the Weddell Sea. Stepping off a ship onto sea ice only 0.7 m thick felt surreal. Many photos captured the ship resembling the Endurance locked in pack ice. We

gained a sense of how Shackleton and his men spent months camped on floes, watching their ship break up and sink under the forces of moving ice.

8 November 2025, PM: Penguin Island, King George Island

Zodiac cruising took place in challenging sea swell and wind. Swells crossed each other, sending up vertical waves that prevented a landing on the seemingly penguin-free island. A couple of brave birds and the odd seal were spotted along the beaches.

9 November 2025, Pre-AM: Gibbs Island

Zodiac cruising revealed a rare macaroni penguin colony perched high on the rocks of dramatic cliff features on this spit of land jutting into the ocean en route to Elephant Island.

9 November 2025, AM: Endurance Glacier, Elephant Island

Distance: 2.25 km | Ascent: 51 m | Time: 1 hr 25 mins

Walking in sunshine at a rarely visited site on the southern fringe of the Endurance Glacier, we enjoyed more crampon travel. We took the chance to slide around on firn snow and completed our self-arrest training component.

9 November 2025, PM: Point Wild, Elephant Island

A notoriously swelly and wild sea state makes it difficult to land where Shackleton, Wild and their men camped using upturned lifeboats. We briefly touched ground at the infamous site of the Endurance crew's beach camp on what remains of an inhospitable shore. We imagined the men waving off the James Caird as it set out for South Georgia in hope of rescue.



12 November 2025: King Haakon Bay, South Georgia

Distance: 12.46 km | Ascent: 586 m | Time: 7 hrs 32 mins

Start of the Shackleton Crossing. We began in sunshine, which quickly deteriorated to 20 m visibility for the rest of the day. It felt like being trapped inside a ping pong ball, walking endlessly on a bearing towards the pass using whiteout compass navigation to reach the site of the infamous bum-slide down the steep crux slope. We made our way up to the saddle between the tridents. With low visibility and weather incoming, we returned to camp out of the worst wind. Snow and rain began about 5 pm and continued all night.

13 November 2025: Possession Bay, South Georgia

Distance: 14.64 km | Ascent: 94 m | Descent: 500 m | Time: 7 hrs 2 mins

Up early with the pre-4 am sunrise, we had warm breakfast and broke camp to face the crux of the trip. The descent into the Compass Glacier is the make-or-break terrain of the crossing. A brief clearance gave us views of the 1916 glacier and the James Caird Nunatak at the top of the Fortuna. Warm snow, weak bridges after rain and an ice wall blocking the slope forced us to turn back, exiting via the east side of the Possession Glacier where the ship awaited. Another long day in the ping pong ball escaping orographic cloud, with rain most of the day. Around 3 pm we spotted the ship and our beach, a welcome escape from South Georgia's notorious weather.

14 November 2025, PM: Godthul to Sandebugten, South Georgia

Distance: 9.35 km | Ascent: 282 m | Time: 4 hrs 45 mins

Rejoining the crew of Expeditioners, now a team of around 37, we tackled the challenging hike from Godthul on the east side of the peninsula to Sandebugten beach in Cumberland Bay. Views of towering mountains and huge glaciers grinding into the ocean were spectacular. Linking the sites was a moonscape of an old glacial valley, otherworldly compared to where we had been. Exposed trail sections included rock slabs and tussock fields leading to Echo Lake, home to pintail ducks, the only carnivorous duck in the world, unique to South Georgia. We climbed steep scree and terraces to Reindeer Lake's turquoise waters before descending through valleys of grasses and seals to Sandebugten beach for Zodiac pick-up.

15 November 2025, AM: Grytviken, South Georgia

After visiting the museum, post office and whaling station ruins, we witnessed a wedding at Grytviken Church. Andrew and Michelle shared their special day with the Shackleton crossing party, guides, the Expedition Team and fellow Expeditioners. The couple were dressed to the nines, complete with mountaineering boots as wedding footwear. After the ceremony we toasted "the Boss" at Shackleton's grave in Grytviken Cemetery.

15 November 2025, PM: Leith to Stromness Walk, South Georgia

Distance: 2.85 km | Ascent: 83 m | Time: 2 hrs 15 mins

With mileage under our belts, we finished with an easy wander through tussocks, alpine grasses and moss to a view of both Leith and Stromness whaling stations. Fur seals crowded the beaches.







Bird & Mammal Sightings

Antarctica

Bird Species	November										
	2	3	4	5	6	7	8	9	10	11	
Gentoo Penguin					●	●		●			
Chinstrap Penguin					●			●	●		
Adélie Penguin						●		●			
Magellanic Penguin			●								
Emperor Penguin						●					
Black-Browed Albatross		●	●	●				●		●	
Grey-Headed Albatross			●						●	●	
Light-Mantled Albatross			●								
Giant Petrel Sp. (Northern or Southern)		●	●		●	●	●	●	●	●	
Antarctic Petrel					●						
Cape Petrel			●	●	●		●	●	●		
Snow Petrel						●			●	●	
Antarctic Fulmar (Southern Fulmar)					●	●	●	●	●	●	
Blue Petrel			●							●	
Prion Sp. (Most Likely Antarctic)			●	●	●			●		●	
Sooty Shearwater			●								
Wilson's Storm-Petrel					●		●	●	●		
Black-Bellied Storm-Petrel										●	
Imperial Cormorant (Blue-Eyed Shag)		●	●								
Magellanic Cormorant (Rock Shag)			●								

Bird Species	November										
	2	3	4	5	6	7	8	9	10	11	
Antarctic Cormorant					●	●		●			
Dolphin Gull		●	●								
Kelp Gull		●	●		●	●		●			
Skua (Brown or South Polar)					●	●		●			
Chilean Skua			●								
South American Tern			●								
Antarctic Tern					●	●	●	●			
Snowy Sheathbill					●	●		●			

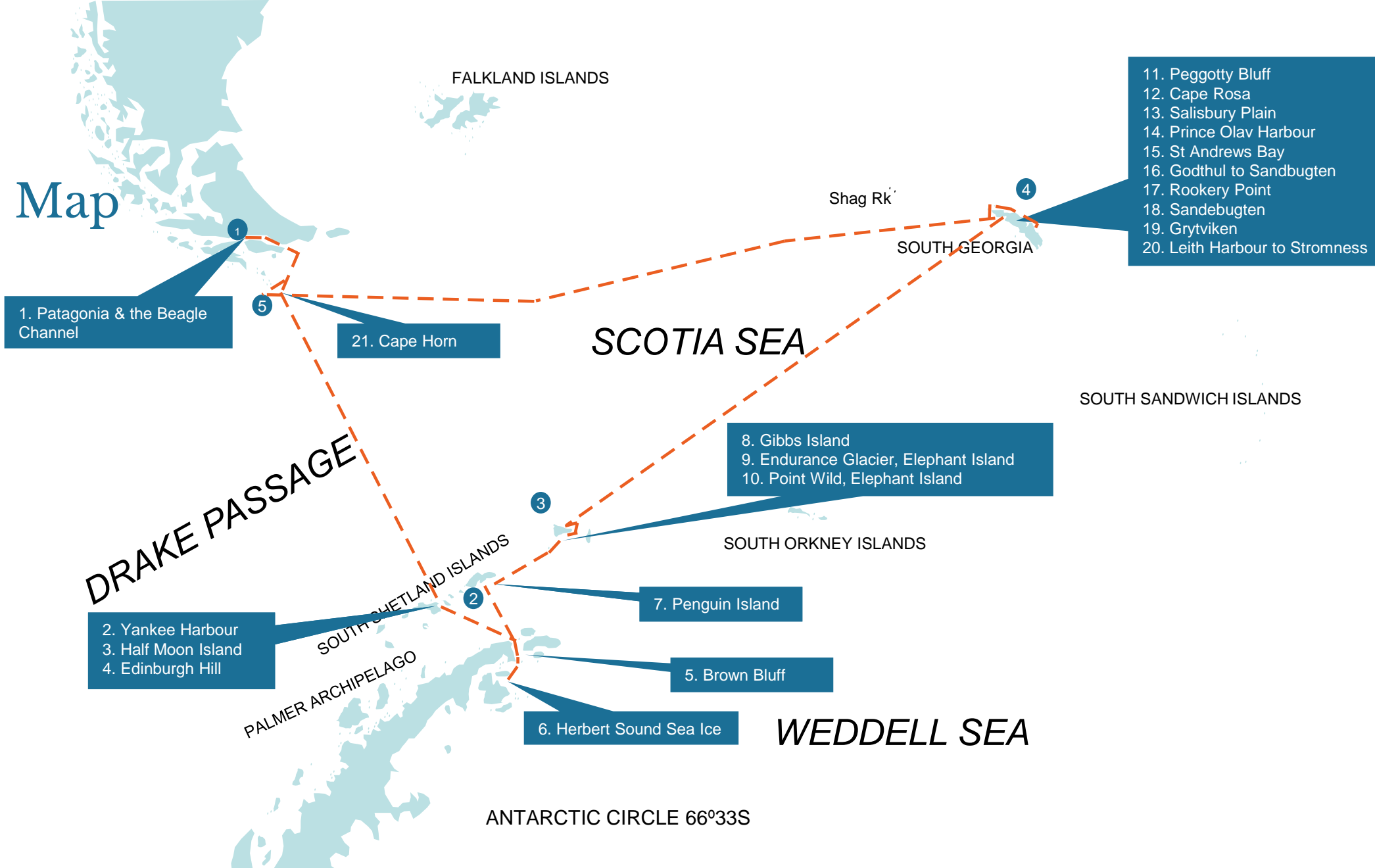
Mammal Species	November										
	2	3	4	5	6	7	8	9	10	11	
Antarctic Fur Seal								●			
Southern Elephant Seal								●			
Crabeater Seal						●					
Weddell Seal					●						
Fin Whale					●		●	●			
Humpback Whale					●		●				
Unidentified Whale							●				
Hourglass Dolphin			●								
South American Sealion			●								

South Georgia

Bird Species	November									
	11	12	13	14	15	16	17	18	19	20
South Georgia Shag (Blue-eyed Shag)		●	●	●	●					
Kelp Gull		●	●	●	●					
Brown Skua		●	●	●	●					
Antarctic Tern		●	●	●	●					
South American Tern									●	
South Georgia Pintail		●	●		●					
Snowy Sheathbill			●	●	●					
South Georgia Pipit		●	●		●					

[illegible]

Map



In Shackleton's Footsteps

2 November – 20 November 2025



Our Expeditioners

Brendon Armstrong	Andrew Cunningham	Des Gray	Chang Liu	Jo Robb	Amanda Urban
Kevin Armstrong	Robin Dalglish	Toni Gwynn-Jones	Mike Liu	Lorraine Ross	Alicia Van Husen
Cheryl Armstrong	Nikki Dawes	Rianna Hage	Jim MacLean	David Ross	Willemijn van Lier
Lucas Aykroyd	Norm Dawes	Russell Hall	Wayne Markus	Lesley Russell Wolpe	Ruud Vat
Joe Beatus	Andrew Denny	Sue Hall	Karen Markus	Jean Scott	David Wilson
Regina Beatus	Jeff Foote	Patrick Hartley	Mitch Martyna	Jim Scott Jr.	Bruce Wolpe
Mike Blanchflower	Anne Foote	Michelle Hemmings	Kathy Martyna	Glen Smith	Paul Zuchowski
David Blitz	Lesley Francis	Alan Henderson	Melissa Mcclung	Jacqueline Smith	
Jakob Bolin	Trevor Francis	Jonathan Houston	Janine McEwan	Melvyn Smith	
Jonathan Bolin	Elena Frey	Sarah Houston	Keith McLean	Vivien Sonogo	
Odd Bolin	Richard Fryer	Richard I'Anson	Alan Meeker	Maureen Toland	
Paul Boyette Jr.	Helen Fryer	Margaret Kane	Joseph Oler	Claire Turney	
Derek Burdeny	Ken Gibson	Eileen Knudson	Tess Reid	Matt Turney	
Christina Cook	Jenny Gibson	Thomas Knudson	Sebastian Reid	Keiko Uehara	
Jono Cook	Steve Goebel	Kathleen La Porte	Karen Reid	Guenther Ulfert	
Sarah Corry	Mike Goebel	Carol Larson	Peter Reid	Ute Ulfert	
Stephen Corry	Mark Goebel	Mike Larson	Philippa Reid Dalglish	Josh Urban	

Expedition Team

Expedition Leader: Ashley Perrin

Assistant Expedition Leader: Dot Robertson

Onboard Expedition Manager: Anne Oeyasaeter

Shop Manager: Cecilia Mossi

Marine Biologist: Marcelo Flores

Glaciologist/Geologist EC: Sydney Carste

Ornithologist/Naturalist CSC: Vicky Inglis

Historian: Kelsey Camacho

Photography Guide: Carlos Mauer

Expedition First Responder: Laura Boenish

Expedition Guide: Zhongyuan Chen

Lead Kayak Guide: Ivan Klochkov

Senior Kayak Guide: Edu Larranga

Kayak Guide: Pablo Passera

Lead Alpine Guide: Tarn Pilkington

Alpine Guide: Bronwen Waters

Alpine Guide: Dan Phillips

Zodiac Master: Serghei Hinchu

Senior Officers & Heads of Department

Master: Andrus Pruul

Chief Officer: Igor Krechun

Second Officer: Bryan Joseph Salem

Safety Officer: Teddy Lachica

Bosun: Leo Francis Marzan

Ship Doctor: Jose Mullevskyir Sanjuan

Chief Engineer: Artem Vyshnevskyi

First Engineer: Sergeii Luba

IT Officer: Rene Reyes

Hotel Director: Alex Barkar

F&B Service Manager: Narendra Seeram

Head Bartender: Sheenie Landauz

Chief Purser: Pedro Camilo Jr Diaz

Executive Chef: Indra Wicaksono

Sous Chef: Priteviraj Dakona

Hotel Controller: Orlando Costa

Receptionist: Angela Manuel

Receptionist: Jaica Puyod

Head Stateroom Attendant: Florante Lusong

Deck Cadet: Rahul Bhagat

Able Seaman: Eduardo Aloyan

Able Seaman: John Sibug

Able Seaman: Rosendo Cruz

Able Seaman: Anthony Brosas

Able Seaman: Dan Danico

Photography thanks to:

Carlos Mauer





-
-  facebook.com/auroraex
 -  [@aurora_expeditions](https://www.instagram.com/aurora_expeditions)
 -  youtube.com/auroraexpeditions
 -  [Aurora Expeditions
\(@Polar_Experts\)](https://twitter.com/Polar_Experts)